

LED Trough Light EXTRA-LED-PLUS/FROST



MODELS:

Voltage	Power	Luminous flux	T _a max	Dimensions	Weight	Order no.
230 V AC	28 W	4.347 lm	≤+70°C	1.280 x 155 x 105 mm	3,18 kg	EXTRA-PLUS/FROST-28
	56 W	8.694 lm	≤+60°C		3,3 kg	EXTRA-PLUS/FROST-56
	26 W	4.221 lm	≤+70°C	1.580 x 155 x 105 mm	3,96 kg	EXTRA-PLUS/FROST-26
	43 W	6.776 lm	≤+65°C		3,7 kg	EXTRA-PLUS/FROST-43
	69 W	10.911 lm	≤+60°C		3,9 kg	EXTRA-PLUS/FROST-69

- Models with dimming function on request -

SPECIAL FEATURES:

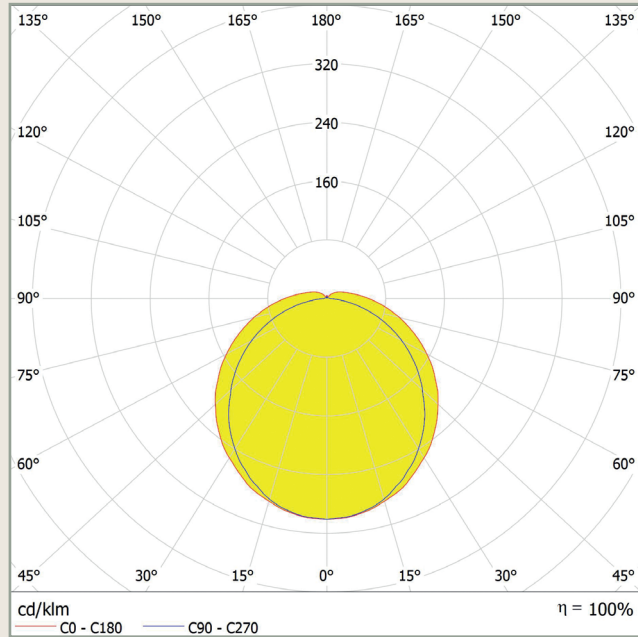
- High-power LED with up to 162 lm/W.
 - Light colour 4,000 K.
 - CRI +80
 - Power factor 0.98
 - Lifetime L80B10 TA30 - up to 70,000 hours
 - Polycarbonate housing and cover
 - Direct mounting via two mounting brackets (included) or alternatively two wall mounting brackets, suspension via chain or cable suspension or mounting for outriggers
 - Cable gland M20
 - Protection class I.
 - IP 66
 - Ambient temperature: $-40^{\circ}\text{C} \leq T_a \leq$ see table
 - Optionally with single-phase or three-phase through-wiring
- High light output
 - Neutral white (2,700 K - 6,500 K on request)
 - High colour rendering index
 - Proven longevity
 - Resistant to mechanical stress
 - Easy installation on the ceiling or wall of the room to be illuminated
 - Line diameter of 7-12 mm
 - Dust and splash protection
 - Use at elevated ambient temperatures and large temperature fluctuations

- Further models on request / subject to change and error -

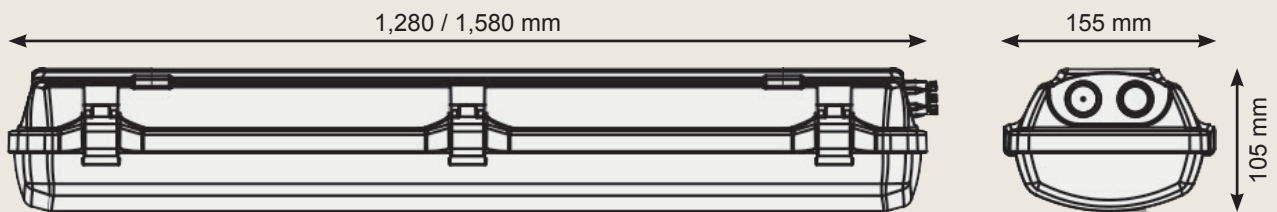
LED Trough Light EXTRA-LED-PLUS/FROST



LIGHT EMISSION:



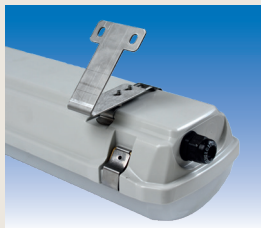
DIMENSIONS:



ACCESSORIES:



Wire hanger set (2 pcs)
for chain suspension
(without chain)
EXV005/SET



Set of 45° metal
brackets for wall
mounting (2 pcs.)
EXV006



Self-locking cable
suspension
(2 pcs. à 3 m)
EXV007



Clamp set (2 pcs.)
for mounting on a
boom with Ø 50 mm
EXV008/SET

– Further models on request / subject to change and error –