



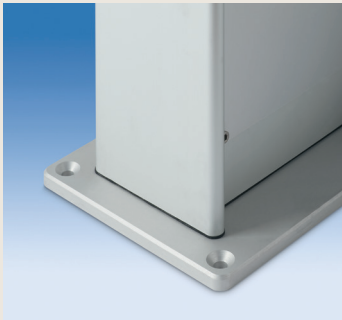
Model	Height	Number	Output	Sockets	Fuse Protection	Residual Current Circuit Breaker $I_n$	RCD Typ A	Order No.					
<b>Type B</b>	757 mm	1	CEE 5 p. / 32 A / 400 V / 6 h	1 CEE 5 p. / 16 A / 400 V / 6 h	2 earthing contact sockets	1 compressed air ½"	2 CAT6 network RJ45	1 MCB C-Char. 3 p. / 16 A	1 MCB B-Char. 1 p. / 16 A	1 RCD 4p. / 40 A / 30 mA	<b>6AM593B001</b>		
<b>Type C</b>	1.040 mm	1	CEE 5 p. / 32 A / 400 V / 6 h	2 CEE 5 p. / 16 A / 400 V / 6 h	2 CEE 3 p. / 16 A / 230 V / 6 h	3 earthing contact sockets	1 compressed air ½"	1 MCB C-Char. 3 p. / 32 A	1 MCB C-Char. 3 p. / 16 A	2 MCB B-Char. 1 p. / 16 A	3 MCB B-Char. 1 p. / 16 A	1 RCD 4p. / 63 A / 30 mA	<b>6AM593C003</b>

- other models on request / subject to modification and errors -

- other models on request / subject to modification and errors -



← The cover plate of each energy column is tightly secured with a rubber seal.



← The column profile and the base plate are tightly screwed together. The base plate is affixed with four M8 screws to the respective ground surface.



→ The feed cable enters the column through the base plate. This area houses the generously dimensioned energy-supply compartment, which ensures the quick and uncomplicated connection of the feed cable after removal of the front panel.

#### **SPECIAL FEATURES:**

- closed anodized and plastic-powder-coated aluminum profile with base and cover plates made of anodized and plastic-powder-coated aluminum → corrosion-resistant and weatherproof to ward against outside elements; long service life
- EPDM seals between the individual column sections → high protection class, up to max. IP 65; suitable for use in damp areas and outdoor sites
- timeless and premium-quality appearance → the columns make a good impression in representative areas as well, such as reception or office spaces
- available in different heights and models → individual models custom-tailored to each client's needs; 4-sided configurations also possible
- individual modular configurations with the highest possible safety thanks to compartmentalization → low-voltage sockets, safety-extra-low-voltage sockets, network sockets, air, intercom systems, switches, etc.
- range of application → offices, reception areas, stand-alone solutions, access control, production areas, laboratories, etc.
- protection guards are externally accessible and situated safely behind transparent hinged windows → simple operation of the protection guards without opening the housing
- dimensions → Footprint: 250x180 mm  
 Profile size: 200x120 mm  
 Wall thickness: min. 2.5 mm