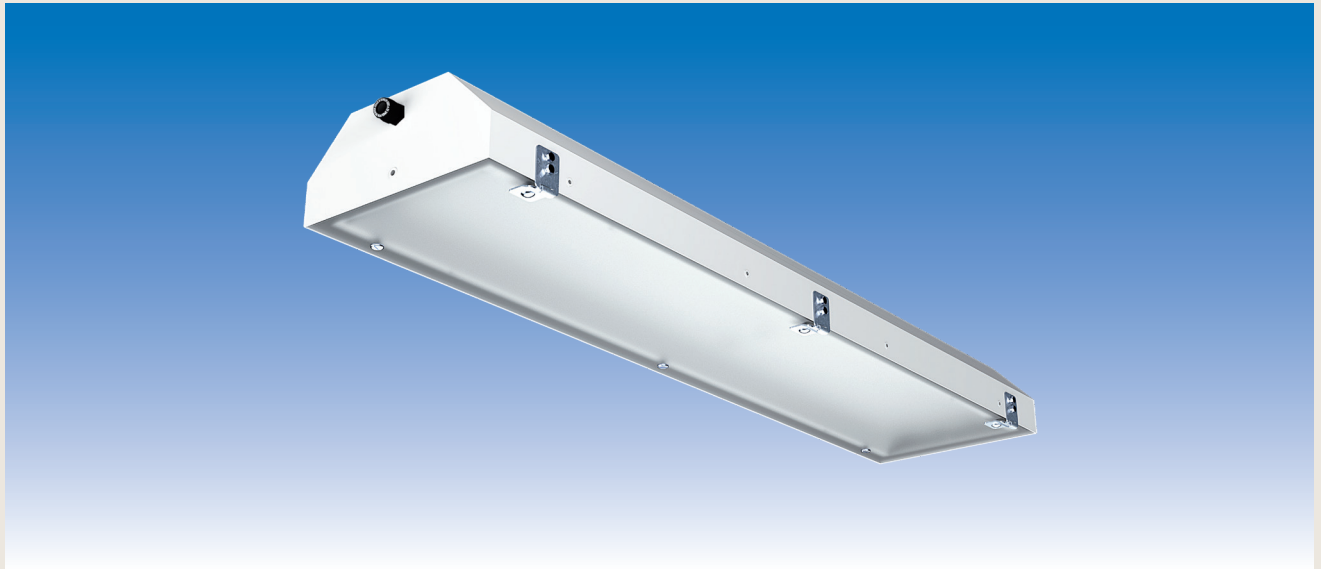


# Ex Surface Light PITBUL-N-LED - Zone 2, 22



## MODELS:

Voltage input	Power	Lumen	T <sub>a</sub> max	Outputs	Dimensions	Weight	Order no.
230 V AC	35 W	4,470 lm	≤+65°C	2P+E	703x310x142 mm	9.1 kg	<b>PITBUL-N-LED-35</b>
	70 W	8,940 lm	≤+55°C		1,313x310x142 mm	13.8 kg	<b>PITBUL-N-LED-70</b>
	104 W	13,410 lm	≤+55°C		1,613x310x142 mm	16.6 kg	<b>PITBUL-N-LED-104</b>
	70 W	8,899 lm	≤+55°C		703x369x142 mm	8.9 kg	<b>PITBUL-N-LED-70-703</b>
	121 W	15,895 lm	≤+50°C		1,313x369x142 mm	16.1 kg	<b>PITBUL-N-LED-121</b>
	195 W	24,845 lm	≤+45°C		1,613x369x142 mm	19.6 kg	<b>PITBUL-N-LED-195</b>

- Dimmable models and those with emergency power on request -

## SPECIAL FEATURES:

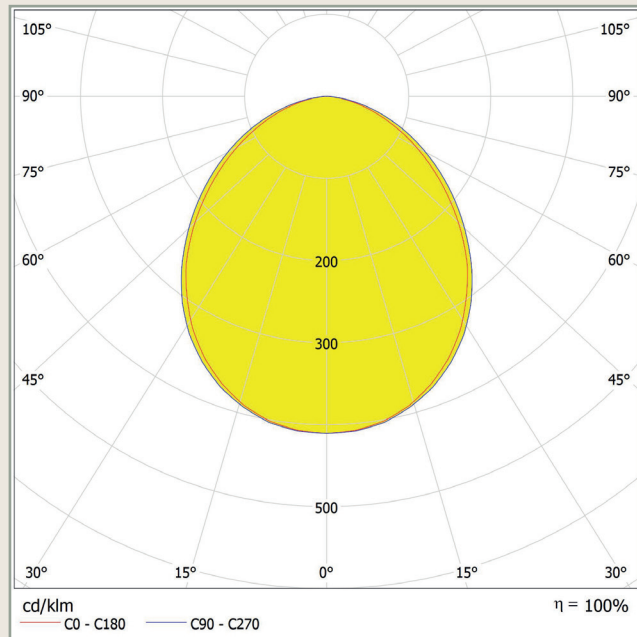
- High-power LED with 127 / 128 / 129 / 131 lm/W → High light output
- Light colour 4,000 K. → Neutral white
- CRI +80 → High colour rendering index
- Power factor 0.98
- Lifetime L80B10 ta30 - up to 70,000 hours → Proven longevity
- Ex II 3G Ex nR IIC T6 Gc → ATEX certificate FTZÚ 17 ATEX 0129X
- Ex II 3D Ex tc IIIC T63°C Dc
- Gas Zone 2
- Dust Zone 22
- White sheet steel housing with hardened opal safety glass → IK07, resistant to mechanical stress (protection against impacts with an impact energy of up to 2 joules)
- Direct mounting with suspension eyes, mounting frames, ceiling brackets or outriggers, screwed on the sides of the housing → Easy installation on the ceiling or wall of the room to be illuminated
- Cable gland M20 → Line diameter of 7-12 mm
- Protection class 1
- IP65 → Dust and splash protection
- Ambient temperature: -20°C ≤ T<sub>a</sub> ≤ see table → Use even with large temperature fluctuations
- silicone-free → Free of paint wetting-interfering substances

- Further models on request / subject to change and error -

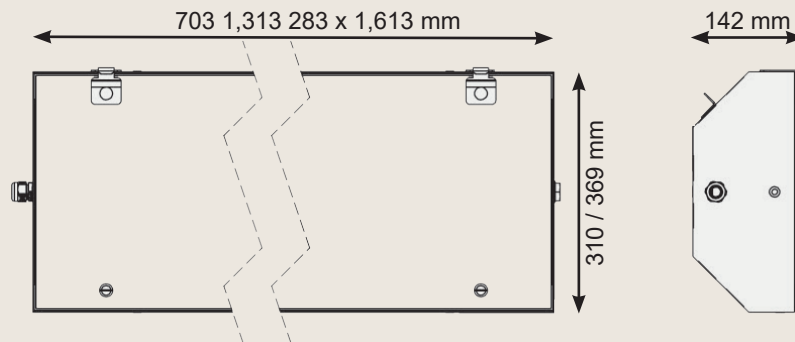
**Ex Surface Light**  
**PITBUL-N-LED - Zone 2, 22**



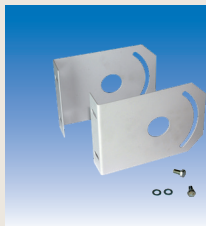
**LIGHT EMISSION:**



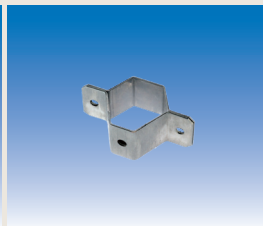
**DIMENSIONS:**



**ACCESSORIES:**



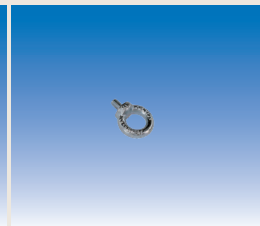
Set of outriggers for mounting via the housing head sides  
**EXV001**



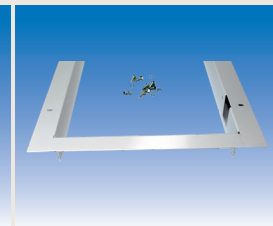
Clamp for mounting on a boom with Ø 50 mm  
**EXV002**



Set of stainless steel ceiling brackets (2 pcs.)  
**EXV003**



Hanging eye (1 pcs.)  
**EXV004**



PITBUL mounting frame  
**EXV015** (-35), **EXV016** (-70-703), **EXV017** (-70), **EXV018** (-121), **EXV019** (-104), **EXV020** (-195)

– Further models on request / subject to change and error –