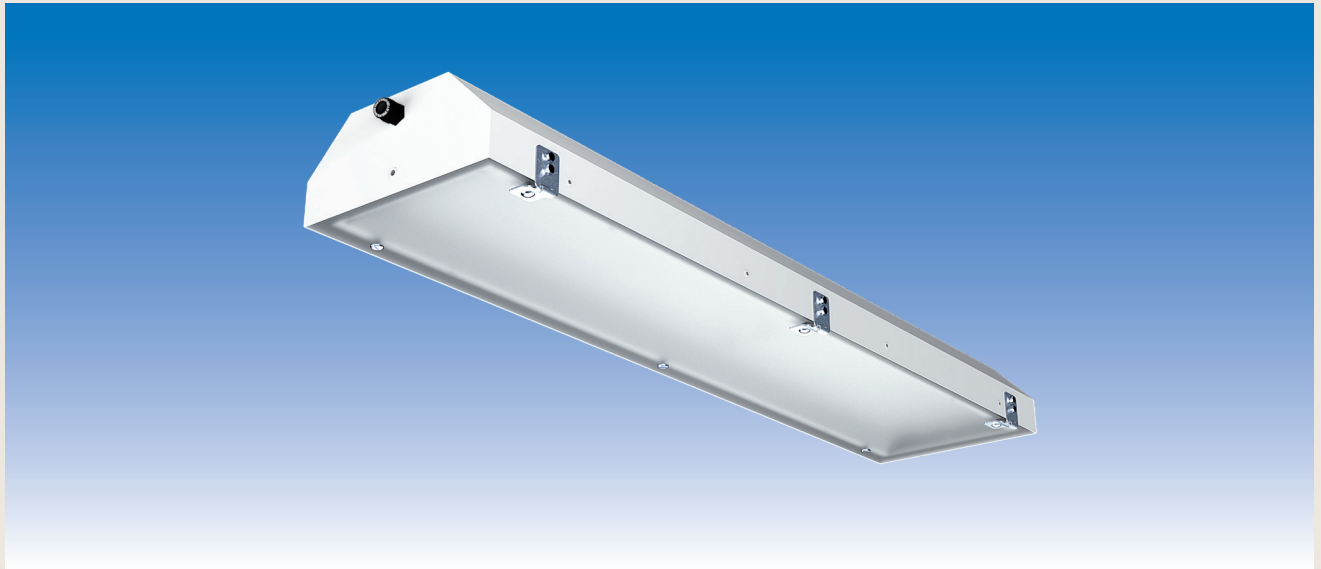


# Ex Surface Light PITBUL-EX-LED - Zone 1, 21



## MODELS:

Voltage input	Power	Lumen	T <sub>a</sub> max	Outputs	Dimensions	Weight	Order no.
230 V AC	30 W	3,373 lm	≤+60°C	2P+E	703x310x142 mm	7.7 kg	PITBUL-EX-LED-30
	51 W	6,663 lm	≤+55°C		703x369x142 mm	10.3 kg	PITBUL-EX-LED-51
	53 W	6,742 lm	≤+60°C		1,313x310x142 mm	15.1 kg	PITBUL-EX-LED-53
	102 W	13,447 lm	≤+55°C		1,313x369x142 mm	19.4 kg	PITBUL-EX-LED-102

- Models with emergency power on request -

## SPECIAL FEATURES:

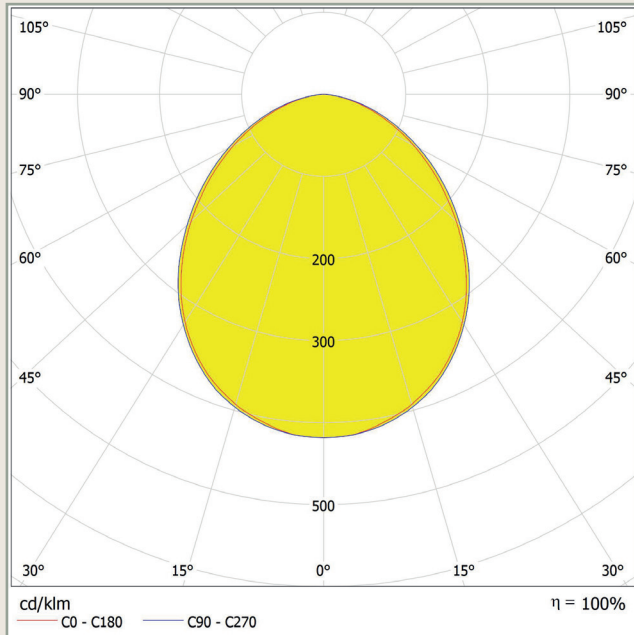
- High-power LED with 112 / 127 / 131 / 132 lm/W → High light output
- Light colour 4,000 K. → Neutral white (3000 K/ 6000 K on request)
- CRI +80 → High colour rendering index
- Power factor 0.98
- Lifetime → Proven longevity
  - L80B50 ta55 - up to 50,000 hours (51 / 102 W)
  - L80B50 ta60 - up to 50,000 hours (30 / 53 W)
- Ex II 2G Ex eb mb op is IIC T4 Gb → ATEX certificate FTZÚ 16 ATEX 0089X
- Ex II 2D Ex tb op is IIIC T67°C Db
- Gas Zone 1
- Dust Zone 21
- White sheet steel housing with hardened opal safety glass → IK07, resistant to mechanical stress (protection against impacts with an impact energy of up to 2 joules)
- Direct mounting with suspension eyes, mounting frames, ceiling brackets or outriggers, screwed on the sides of the housing → Easy installation on the ceiling or wall of the room to be illuminated
- Cable gland M20 → Line diameter of 7-12 mm
- Protection class 1
- Version without disconnecter
- IP65 → Dust and splash protection
- Ambient temperature: -40°C ≤ T<sub>a</sub> ≤ see table → Use even with large temperature fluctuations
- silicone-free → Free of paint wetting-interfering substances

- Further models on request / subject to change and error -

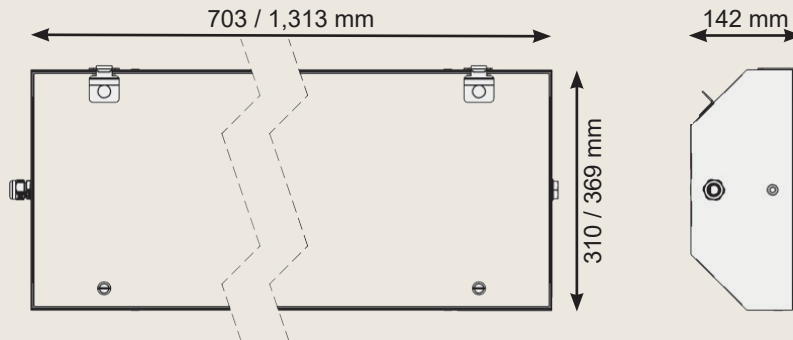
**Ex Surface Light**  
**PITBUL-EX-LED - Zone 1, 21**



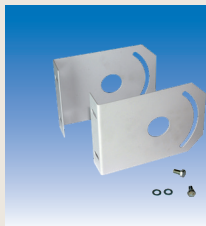
**LIGHT EMISSION:**



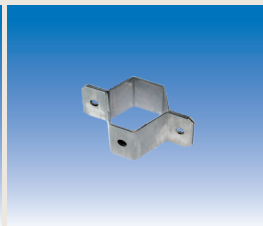
**DIMENSIONS:**



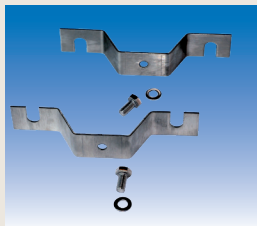
**ACCESSORIES:**



Set of outriggers for mounting via the housing head sides  
**EXV001**



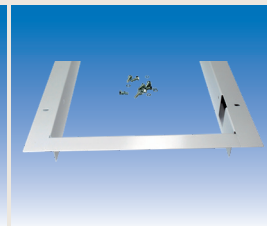
Clamp for mounting on a boom with  $\varnothing 50$  mm  
**EXV002**



Set of stainless steel ceiling brackets (2 pcs.)  
**EXV003**



Hanging eye (1 pcs.)  
**EXV004**



PITBUL mounting frame  
**EXV015 (-30)**  
**EXV016 (-51)**  
**EXV017 (-53)**  
**EXV018 (-102)**

– Further models on request / subject to change and error –