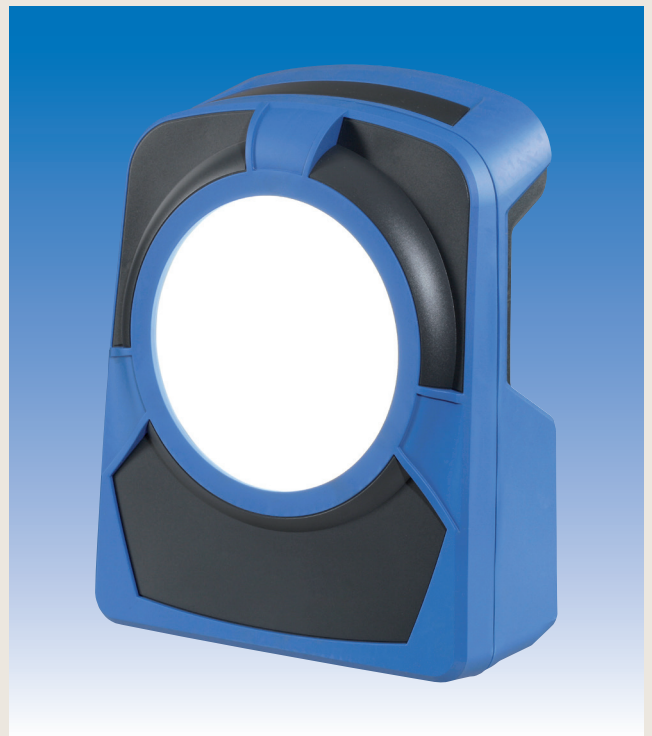


The QV LED 28 Rechargeable is the robust panel luminary for mobile power-network-independent use.

## SPECIAL FEATURES:

- Housing made of shockproof polycarbonate
- Edge guard made of soft, thermoplastic elastomer
- Handle made of shockproof ABS with 10 indexed positions for alignment
- Robust 2-step switch for 50 and 100 % light power
- LED panel with high light power rating: 4.500 Lumen at 100 % light power, 2.300 Lumen at 50 %
- Low heat generation
- Small space requirement due to flat and compact design
- Easy to transport; can be set up versatility and in many different positions
- Splashproof
- Delivery includes fast charger 230 V (QVLA01)

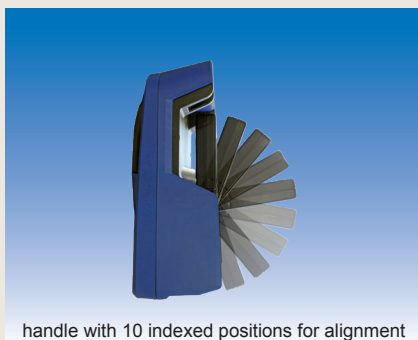


## MODELS:

Type	Illuminant	Lumen LED Panel	Lighting Duration*	Battery	Charging Time	Colour	Dimensions in cm	Weight incl. Battery	Order No.
QV LED 28	1 LED panel	2.300 lm - 4.500 lm	3,0 - 6,0 h depending on mode	Li-Ion 14,4 V / 6,6 Ah	3,0 h	anthracite blue	L = 360 W = 280 H = 130	2,9 kg	<b>QVLA2328</b>

\* maximum lighting duration per battery charge depending on the selected light power mode

ACCESSORIES (images on page 19.4):	Order No.
fast charger 230 V; 3 hours charging time	<b>QVLA01</b>
tripod type BETA 3	<b>TV7521SA</b>
basic mounting bracket for attaching the support bar	<b>TV001</b>
1-panel support bar	<b>QVL001</b>
2-panel support bar	<b>QVL002</b>
magnetic mount for 1 piece QV LED battery 28	<b>QVL01M2</b>



– other models on request / subject to modification and errors –