

ELSPRO®



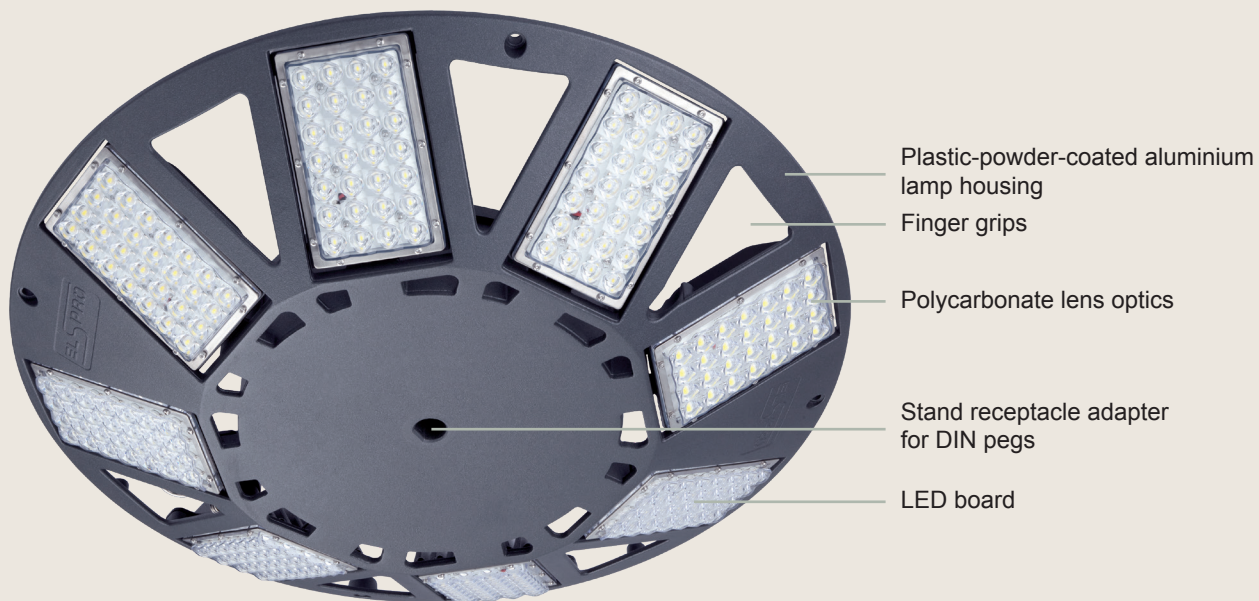
reddot design award



N8LED®

2.1

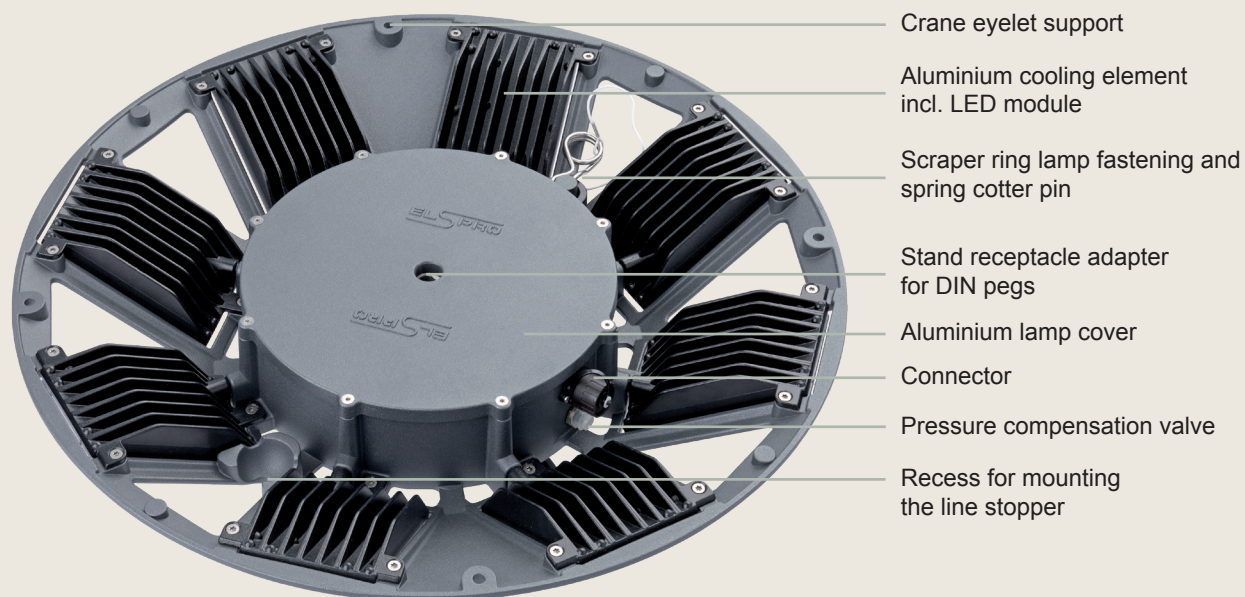




Ø 640 mm



90 mm → low wind load



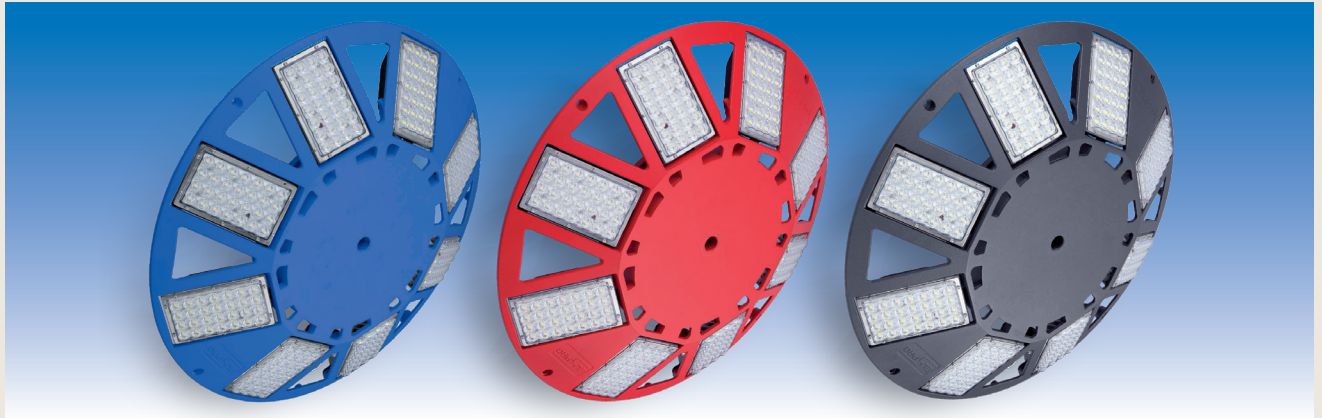
– other models on request / subject to modification and errors –

www.youtube.com/ELSPROTV

Radiant beauty...

Designed for the illumination of all construction and assembly sites in industry and trade, for rescue and emergency services, for control missions, army and events.

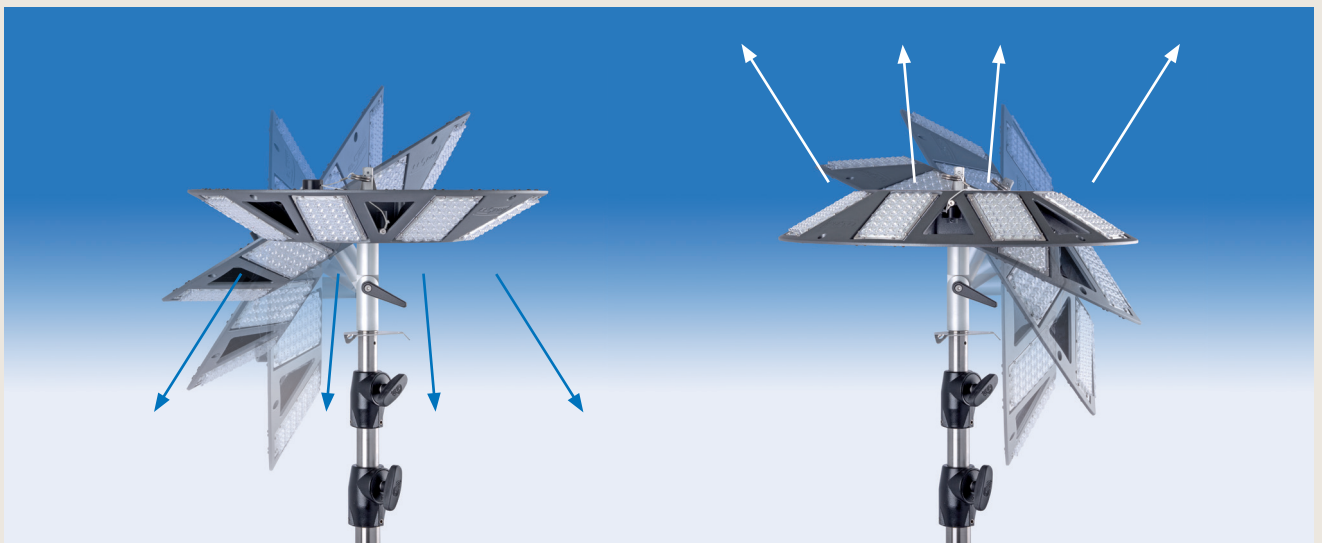
- High availability due to individually driven LED modules
- Modular design, LED modules and drivers individually interchangeable
- Directly after switching on, full power and large-area uniform illumination
- Lighter and quicker assembly of the lighting unit
- Tool-free assembly and disassembly due to captive safety spring-loaded plug and scraper ring
- with intelligent temperature management



N8LED 2.1:

Voltage	BLUE RAL5002	RED RAL3024	ANTHRACITE DB703
42 V AC	N8BL3001-42	N8RT3001-42	N8GR3001-42
230 V AC	N8BL3001	N8RT3001	N8GR3001

Scope of supply: 1 x N8LED 2.1, 1 x stand adapter for DIN peg assembly, 10 m feed lines with plug system and stopper



The stand adapter can be inserted from both sides, so it is possible to cast light downward or upward. With the tilt joint, the N8LED can be aligned in different positions from 0° to 90°.

– other models on request / subject to modification and errors –

N8LED 2.1 DIMMABLE

- LED modules dimmable via integrated electronic pulse width modulation
- Pulse width modulation is controlled by a keyed phase (dim L)
- Each LED module is individually controlled by the electronics

CONTROL ELEMENT

- High-quality industrial push-button
- Housing made of impact-resistant plastic
- Including integrated lashing strap for attachment to stand
- Cable gland with spiral bend protection
- Protection class IP66

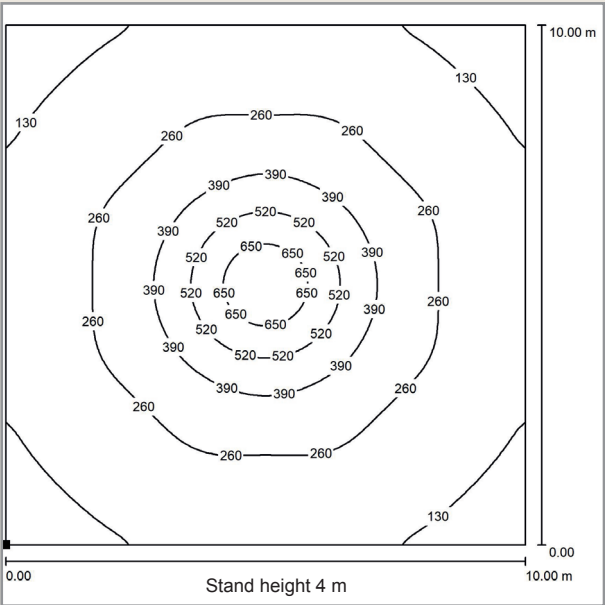


Button	Luminosity
Press button briefly	ON - N8 LED lights up with 100 %.
Press button again briefly	OFF
Press and hold button	Dimming in 20 % steps
Release the button at the desired brightness	N8LED lights in the selected step: 100% / 80% / 60% / 40% / 20%

N8LED 2.1DIMMABLE:

Voltage	BLUE RAL5002	RED RAL3024	ANTHRACITE DB703
230 V AC	N8BLD3001	N8RTD3001	N8GRD3001

Scope of supply: 1 x N8LED 2.1 dimmable, 1 x stand adapter for DIN peg assembly,
10 m feed line with plug system, stopper, and push-button for switching on/off and dimming



Distance [m]	Cone diameter [m]	E(0°)	E(C90)	E(C0)	Illumination intensity [lx]
1.0	5.52 5.32	11192	70.1° 221	69.4° 246	
2.0	11.05 10.64	2798	70.1° 55	69.4° 61	
3.0	16.57 15.96	1244	70.1° 25	69.4° 27	
4.0	22.10 21.28	699	70.1° 14	69.4° 15	
5.0	27.62 26.60	448	70.1° 9	69.4° 10	

Distance [m] Cone diameter [m] Illumination intensity [lx]

— C0 - C180 (Half-peak divergence: 138.8°)

— C90 - C270 (Half-peak divergence: 140.2°)

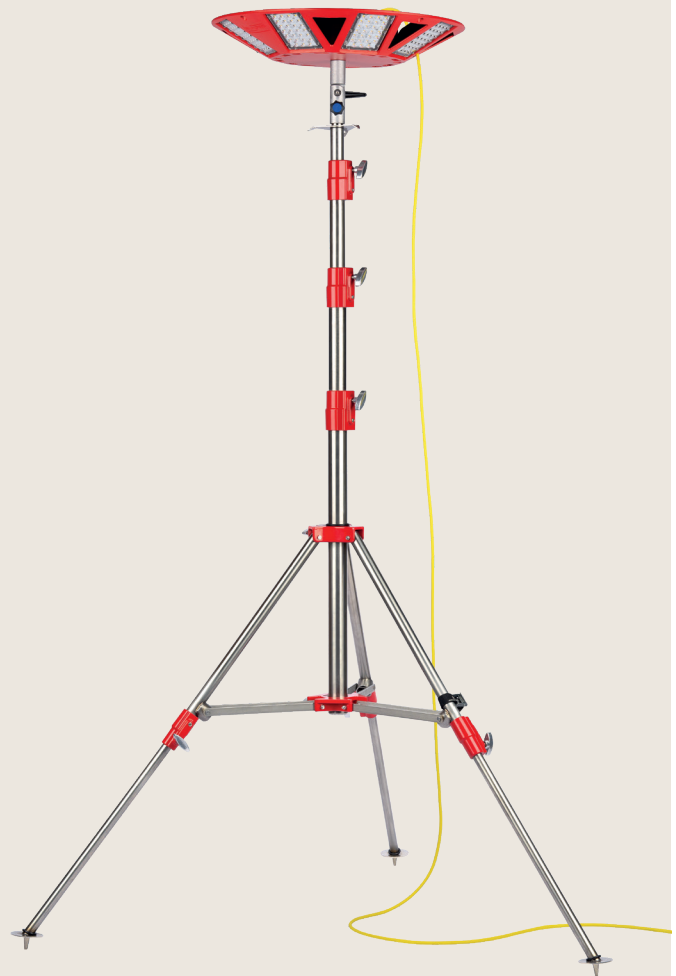
– other models on request / subject to modification and errors –

Voltage	230 V AC +/- 10%
or	42 V AC +/- 10%
Rated frequency	50 Hz
Power consumption	360 watt
Protection type	IP 65
Protection Class	II
Category DGUV informations 203-005	K2
Usage temperature range	-25°C to +40°C
Dimensions (Ø x H)	640 x 90 mm
Number of LEDs	8 x 27 LEDs
Weight	18.0 kg
Angle of emission	360 degrees
Total luminous flux	41,574 lumens
Daylight colour	5,000 Kelvin
German utility model	20 2012 009 175.1
Community design	001350060

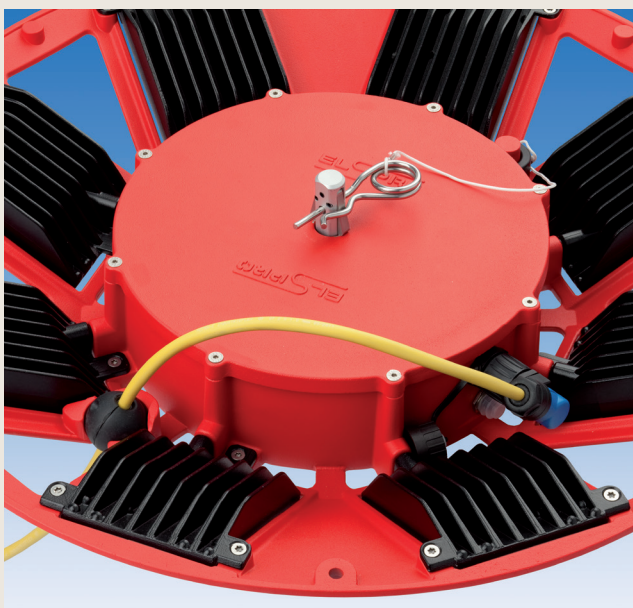
Illustration with stainless steel industrial and fire brigade stand
Type IFW 2.0: **Bestell-Nr. TV7845SA**

or THW model: **Order no. TW7840SA**

– Detailed information,
further stands and mounting kits from page 13.1 -



The spring cotter pin serves as an additional safety device for the stand adapter, so that the expansion flanges cannot be unlocked - for unlocking the expansion flanges, slip the ring over.



Pass the cable through the opening with the recess - Attach the angle coupling to the connector - Place the strain relief ball in the recess - DONE.

– other models on request / subject to modification and errors –

Accessories and spare parts

Order number



Carrying case with adjustable carrying strap for storing and transporting N8LED, cable, accessories and operating instructions.

The cable and operating instructions are stowed on the suspended ceiling, which is fixed with three Velcro fasteners.

Underneath is the compartment for the N8LED. Under the N8LED is another pocket for accessories (stand adapter, chain, etc.).

828-501

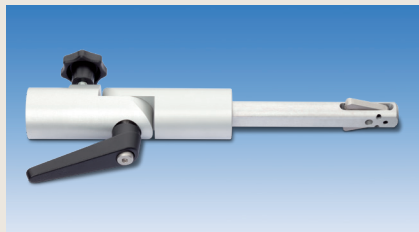
Aluminium frame case for storing and transporting N8LED, cable, accessories and operating instructions.

Ideal for heavy-duty use.

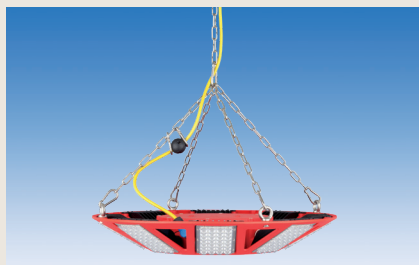
828-502

LED module consisting of:

1 aluminium carrier, 1 LED board,
1 heat conduction mat, 1 PU seal,
1 lens cover,
1 mounting material

828-350

Stand adapter with tilt joint and expansion flanges for mounting on a DIN peg.

828-400

Chain set

consisting of:

1 carabineer hook VA 7x70 mm
6 carabineer hooks VA 6x60 mm
4 carabineer hooks VA M8x20
+ ring nuts VA M8, self-locking
4 pc. à 50 cm round steel chain VA

828-600

Fastening set consisting of each 3 x:

7.5 m polyamide-fastening rope Ø 4 mm as per DIN EN ISO 1140, color: white; 1 carabiner as per DIN 5299-C80; 1 ring, high-gloss galvanized, A 40 x 5, as per DIN 5296; 1 rope thimble as per DIN 6899; 2 wire rope clamps, oval; 1 adjustment element, galvanized, for adjusting the rope length

AS750X3

Ground anchoring set

3 x ground anchors:
400 mm long, hot-dip galvanized

EA400

– other models on request / subject to modification and errors –