



MODELS IN

Lamps	Output	Lumen LED panel	Length in mm	Weight in kg	Cable with plug	IP44	IP44	IP54:
						Order no. 24 V AC*	Order no. 42 V AC*	Order no. 230 V AC
LED panel	23 W	3,000	750	2.55	5 m	SLZ2423/5/01	SLZ4223/5/01	SLZ2323/5/01
				3.30	10 m	SLZ2423/10/01	SLZ4223/10/01	SLZ2323/10/01
LED panel	46 W	6,000	1,310	3.55	5 m	SLZ2446/5/01	SLZ4246/5/01	SLZ2346/5/01
				4.30	10 m	SLZ2446/10/01	SLZ4246/10/01	SLZ2346/10/01

MODELS IN IP67:

Lamps	Output	Lumen LED panel	Length in mm	Weight in kg	Cable with plug	Order no. 230 V AC
LED panel	23 W	3,000	750	2.55	5 m	SLZ2323/5/01DWD
				3.30	10 m	SLZ2323/10/01DWD
LED panel	46 W	6,000	1,310	3.55	5 m	SLZ2346/5/01DWD
				4.30	10 m	SLZ2346/10/01DWD



– other models on request / subject to modifications and errors –

ELSPRO LED Tent Lamps SLZ Product Series
Ø 70 mm polycarbonate

SPECIAL FEATURES:

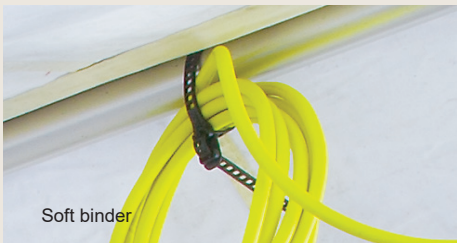
- protective polycarbonate tube with two rubber cuffs → impact-resistant and protected
- plastic end caps with integrated plug and/or integrated cable plug system → simple modular structure
- large number of lamps possible in series connection → optimal SOLUTIONS, depending on the site of operation and lighting needs
- low heat development → no burns if touched
SAFETY
- 230 V: IP 54 – splash-resistant and/or IP 67 – waterproof → can also be used in outdoor areas
- full illumination intensity when first turned on, also in the case of low temperatures → immediately usable



ACCESSORIES :

Order no.

- plastic retaining clamps for wall or ceiling mounting **SLZ001**
- plastic retaining clamps with magnet **SLZ002**
- metal retaining clamps with magnet **SLZ003**
- metal retaining clamps with strap hanging **SLZ004**
- metal retaining clamps with rubber expander hanging **SLZ005**



Soft binder 340.0 x 11.0 mm
(re-openable cable bundling system
for fixing extra cable)

SOFTBINDER340

– other models on request / subject to modifications and errors –



MODELS:

Lamps	Output	Luminous flux LED panel	Protection class	Cable with plug	Output	Length	Weight	Order no. 230 V AC
LED panel	33 W	3,450 lm	IP 67	5 m	- without -	965 mm	3.1 kg	SLZN2333/5
				10 m			4.1 kg	SLZN2333/10
			IP 54	5 m	1 earthing contact	1,030 mm	3.3 kg	SLZN2333/5/01
				10 m			4.3 kg	SLZN2333/10/01

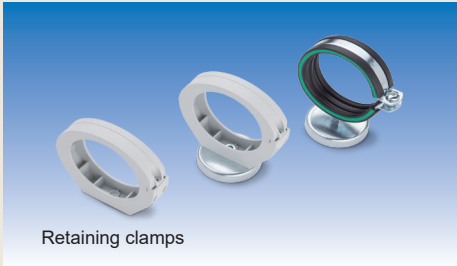


– other models on request / subject to modifications and errors –

ELSPRO LED Tent Lamps SLZ Product Series
with emergency light function

SPECIAL FEATURES:

- protective polycarbonate tube with two rubber cuffs
 - plastic end caps with integrated plug and/or integrated cable plug system
 - large number of lamps possible in series connection
 - low heat development
 - 230 V: IP 54 – splash-resistant and/or IP 67 – waterproof
 - full illumination intensity when first turned on, also in the case of low temperatures
 - emergency light function
- impact-resistant and protected
 - simple modular structure
 - optimal SOLUTIONS, depending on the site of operation and lighting needs
 - no burns if touched
SAFETY
 - can also be used in outdoor areas
 - immediately usable
 - additional lighting in case of power failure max. 120 minutes



ACCESSORIES :

Order no.

- plastic retaining clamps for wall or ceiling mounting **SLZ001**
- plastic retaining clamps with magnet **SLZ002**
- metal retaining clamps with magnet **SLZ003**
- metal retaining clamps with strap hanging **SLZ004**
- metal retaining clamps with rubber expander hanging **SLZ005**



Soft binder 340.0 x 11.0 mm
(re-openable cable bundling system
for fixing extra cable)

SOFTBINDER340

– other models on request / subject to modifications and errors –