

VERSIONS:

Voltage	Output	Lumen	R _a	Dimensions	Weight	Order No.
100 - 240 V AC 50 / 60 Hz	max. 80 W	12,000 150 lm / W	≥ 80	Ø: 378.2 mm H: 191.5 mm (Including bracket)	9.1 kg	ESJ080110

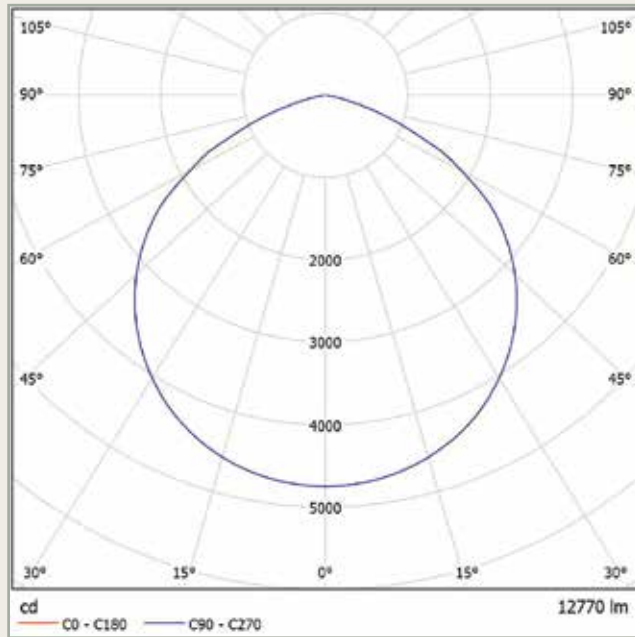
SPECIAL FEATURES:

- High-performance LED modules with 288 nodes evenly distributed on a large area and a 110° beam angle produces a homogeneous light pattern
 - Colour temperature: 5,000 K
 - Ambient temperature: **-20 °C to +55 °C**
 - Ingress protection type: **IP66**
 - Mains adapter and driver are fitted in an extra housing on the floodlight housing for easy mounting
 - Diecast aluminium housing with **special paint**
 - High number of cooling ribs
 - The low weight of only 9.1 kg (aluminium housing) and strong mounting bracket including eye-bolts allows for easy and reliable ceiling or wall mounting. An additional safety wires with karabiner hooks are included
 - Connection is by a flexible cable with jacketed ends
- Perfect for providing even illumination of areas
 - Similar to daylight
 - Can be used indoors and outdoors, even under large temperature fluctuations
 - Proof against dust entry and protected against for powerful water jets
 - No negative interactions due to heating up
 - Optimised reduction of dust deposits on the surface
 - Excellent heat management - designed for long LED service life of up to 50,000 hours - **COST SAVING**
 - Double protection - double safety



– Other versions on request / subject to changes, E&OE –

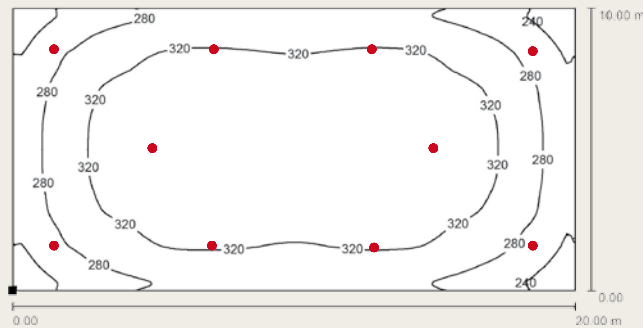
Light emission:



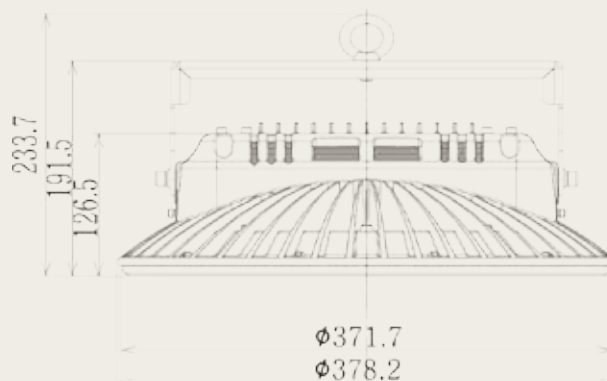
Abstand [m]	Kegeldurchmesser [m]	E(0°)	E(CO)	Beleuchtungsstärke [lx]
1.6	4.82	1855	56.4°	158
3.2	9.63	464	56.4°	39
4.8	14.45	206	56.4°	18
6.4	19.27	116	56.4°	10
8.0	24.08	74	56.4°	6

Abstand [m] Kegeldurchmesser [m] Beleuchtungsstärke [lx]
 — CO - C180 (Halbstrahlwinkel: 112.8°)

Example from practice 10 SPACEJET 80 110°:





Room height: 8,00 m
 Mounting height: 8,00 m
 Maintenance factor: 0,80
 Work plane: 0,85 m
 E_m : 309,00 Lux
 g_1 : 0,65



– Other versions on request / subject to changes, E&OE –

SPACEJET 280 110°

ELSPRO LED Floodlight with DALI Control

CE IP66  



VERSIONS:

Voltage	Output	Lumen	R _a	Dimensions	Weight	Order No.
100 - 240 V AC 50 / 60 Hz	max. 280 W	42,000 150 lm / W	≥ 80	Ø: 484.7 mm H: 279.7 mm (Including bracket)	16.7 kg	ESJD280110

SPECIAL FEATURES:



- High-performance LED modules with 1.024 nodes evenly distributed on a large area and a 110° beam angle produces a homogeneous light pattern
 - Colour temperature: 5,000 K
 - Ambient temperature: **-20 °C to +55 °C**
 - Ingress protection type: **IP66**
 - Mains adapter and driver are fitted in an extra housing on the floodlight housing for easy mounting
 - Diecast aluminium housing with **special paint**
 - High number of cooling ribs
 - The low weight of only 16.7 kg (aluminium housing) and strong mounting bracket including eye-bolts allows for easy and reliable ceiling or wall mounting. An additional safety wires with karabiner hooks are included
 - Connection is by a flexible cable with jacketed ends
 - With DALI control
- Perfect for providing even illumination of areas
 - Similar to daylight
 - Can be used indoors and outdoors, even under large temperature fluctuations
 - Proof against dust entry and protected against for powerful water jets
 - No negative interactions due to heating up
 - Optimised reduction of dust deposits on the surface
 - Excellent heat management - designed for long LED service life of up to 50,000 hours - COST SAVING
 - Double protection - double safety



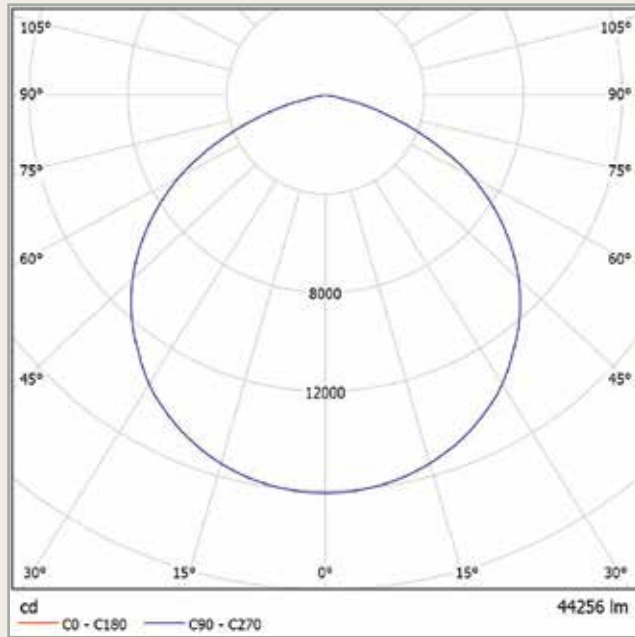
– Other versions on request / subject to changes, E&OE –

SPACEJET 280 110°

ELSPRO LED Floodlight with DALI Control

CE IP66  

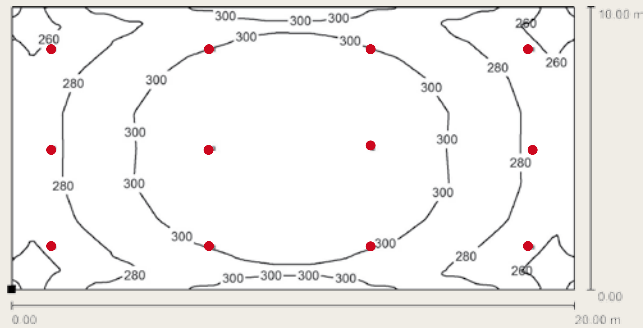
Light emission:



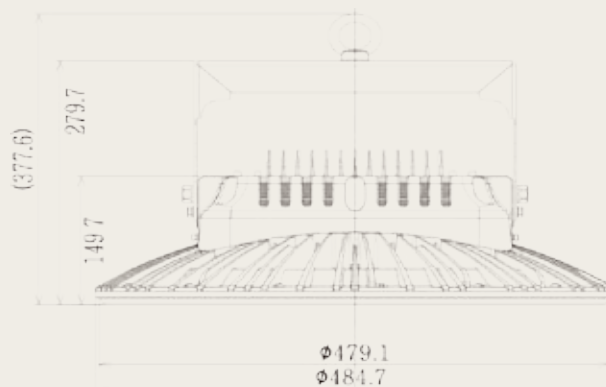
4.0	12.13	E(0°)	1006
		E(C0)	84
8.0	24.27	E(0°)	252
		E(C0)	21
12.0	36.40	E(0°)	112
		E(C0)	9
16.0	48.53	E(0°)	63
		E(C0)	5
20.0	60.66	E(0°)	40
		E(C0)	3
24.0	72.80	E(0°)	28
		E(C0)	2
28.0	84.93	E(0°)	21
		E(C0)	2

Abstand [m] Kegeldurchmesser [m] Beleuchtungsstärke [lx]
 — C0 - C180 (Halbstreuwinkel: 113.2°)

Example from practice 12 SPACEJET 280 110°:





Room height: 28,00 m
 Mounting height 28,00 m
 Maintenance factor: 0,80
 Work plane 0,85 m
 E_m : 293,00 Lux
 g_1 : 0,85



– Other versions on request / subject to changes, E&OE –

SPACEJET 300 60°

ELSPRO LED Floodlight with DALI Control

CE IP66  



VERSIONS:

Voltage	Output	Lumen	R _a	Dimensions	Weight	Order No.
100 - 240 V AC 50 / 60 Hz	max. 300 W	36,000 120 lm / W	≥ 80	Ø: 484.7 mm H: 279.7 mm (Including bracket)	16.7 kg	ESJD300060

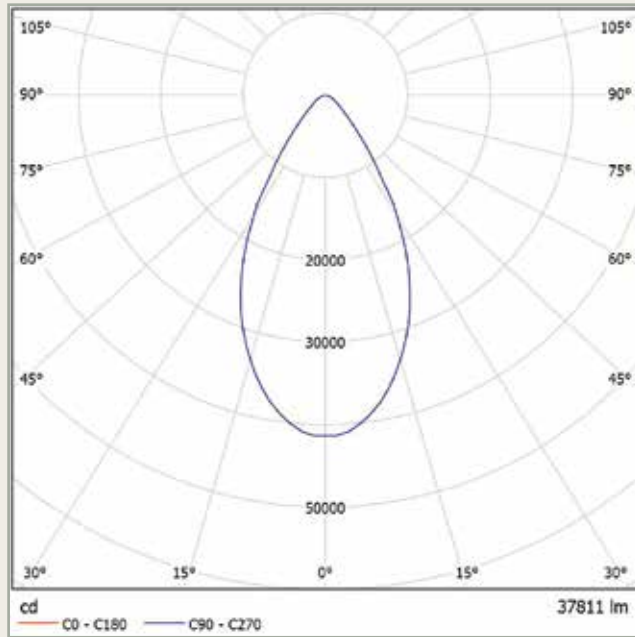
SPECIAL FEATURES:

- 128 high-performance LEDs with supplementary lenses and a 60° beam angle produces a focused light pattern
- Colour temperature: 5,000 K
- Ambient temperature: **-20 °C to +55 °C**
- Ingress protection type: **IP66**
- Mains adapter and driver are fitted in an extra housing on the floodlight housing for easy mounting
- Diecast aluminium housing with **special paint**
- High number of cooling ribs
- The low weight of only 16.7 kg (aluminium housing) and strong mounting bracket including eye-bolts allows for easy and reliable ceiling or wall mounting. An additional safety wires with karabiner hooks are included
- Connection is by a flexible cable with jacketed ends
- With DALI control
- For providing focused illumination of areas from a great height
- Similar to daylight
- Can be used indoors and outdoors, even under large temperature fluctuations
- Proof against dust entry and protected against for powerful water jets
- No negative interactions due to heating up
- Optimised reduction of dust deposits on the surface
- Excellent heat management - designed for long LED service life of up to 50,000 hours - COST SAVING
- Double protection - double safety



– Other versions on request / subject to changes, E&OE –

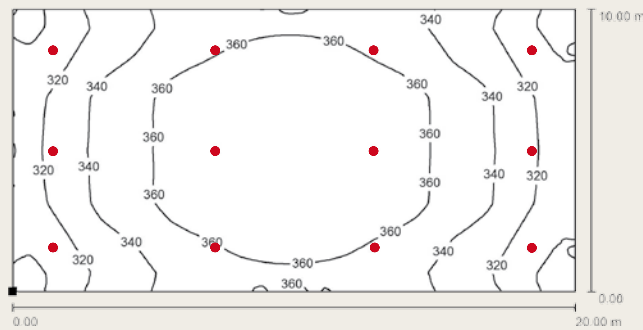
Light emission:



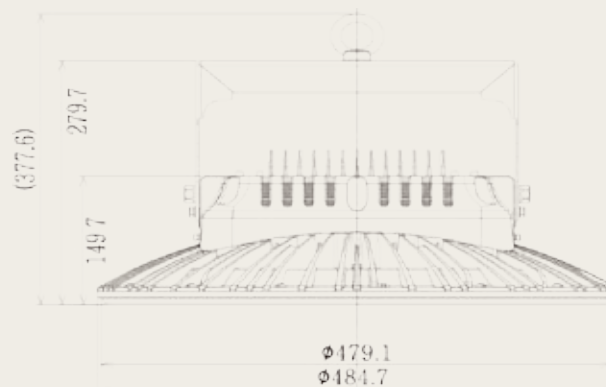
5.0	5.27	E(0°)	1653
		E(C0)	575
10.0	10.54	E(0°)	413
		E(C0)	144
15.0	15.82	E(0°)	184
		E(C0)	64
20.0	21.09	E(0°)	103
		E(C0)	36
25.0	26.36	E(0°)	66
		E(C0)	23
30.0	31.63	E(0°)	46
		E(C0)	16
35.0	36.91	E(0°)	34
		E(C0)	12

Abstand [m] Kegeldurchmesser [m] Beleuchtungsstärke [lx]
 — C0 - C180 (Halbstreuwinkel: 55,6°)

Example from practice 12 SPACEJET 300 60°:



Room height: 35,00 m
 Mounting height 35,00 m
 Maintenance factor: 0,80
 Work plane 0,85 m
 E_m : 346,00 Lux
 g_1 : 0,83



– Other versions on request / subject to changes, E&OE –



VERSIONS:

Voltage	Output	Lumen	R _a	Dimensions	Weight	Order No.
100 - 240 V AC 50 / 60 Hz	max. 380 W	49,400 130 lm / W	≥ 80	Ø: 484.7 mm H: 279.7 mm (Including bracket)	16.7 kg	ESJ2D380060

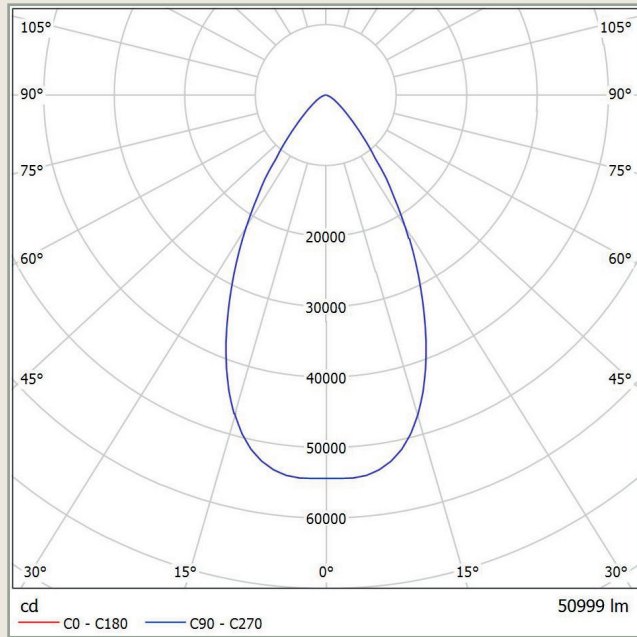
SPECIAL FEATURES:

- 160 high-performance LEDs with supplementary lenses and a 60° beam angle produces a focused light pattern
- Colour temperature: 5,000 K
- Ambient temperature: **-20°C to +55°C**
- Ingress protection type: **IP 66**
- Mains adapter and driver are fitted in an extra housing on the floodlight housing for easy mounting
- Diecast aluminium housing with **special paint**
- High number of cooling ribs
- The low weight of only 16.7 kg (aluminium housing) and strong mounting bracket including eye-bolts allows for easy and reliable ceiling or wall mounting. An additional safety wires with karabiner hooks are included
- Connection is by a flexible cable with jacketed ends
- With DALI control
- For providing focused illumination of areas from a great height
- Similar to daylight
- Can be used indoors and outdoors, even under large temperature fluctuations
- Proof against dust entry and protected against for powerful water jets
- No negative interactions due to heating up
- Optimised reduction of dust deposits on the surface
- Excellent heat management - designed for long LED service life of up to 50,000 hours - COST SAVING
- Double protection - double safety



– other models on request / subject to modification and errors –

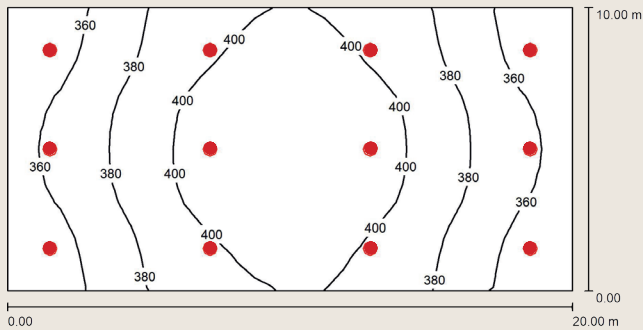
Light emission:



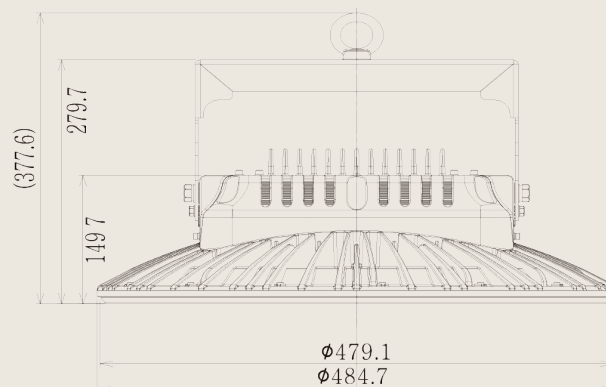
8.0	8.44	E(0°) E(C0)	27.8°	849 296
16.0	16.87	E(0°) E(C0)	27.8°	212 74
24.0	25.31	E(0°) E(C0)	27.8°	94 33
32.0	33.74	E(0°) E(C0)	27.8°	53 19
40.0	42.18	E(0°) E(C0)	27.8°	34 12

Abstand [m] Kegeldurchmesser [m] Beleuchtungsstärke [lx]
— C0 - C180 (Halbstreuwinkel: 55.6°)

Example from practice 12 SPACEJET 380 60°:



Room height: 40,00 m
Mounting height 40,00 m
Maintenance factor: 0,80
Work plane 0,85 m
 E_m : 383,00 Lux
 g_1 : 0,89



– other models on request / subject to modification and errors –