

VERSIONS:

Voltage	Output	Lumen	R _a	Dimensions	Weight	Order No.
100 - 240 V AC 50 / 60 Hz	max. 80 W	12,000 150 lm / W	≥ 80	Ø: 378.2 mm H: 191.5 mm (Including bracket)	9.1 kg	ESJ080110

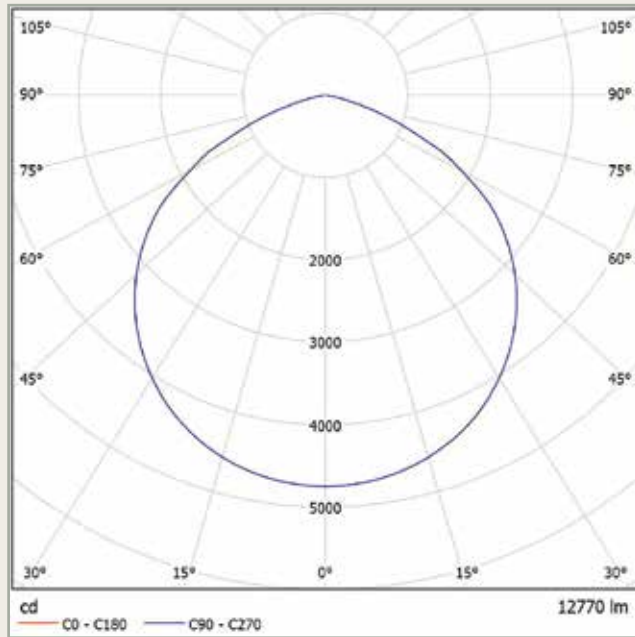
SPECIAL FEATURES:

- High-performance LED modules with 288 nodes evenly distributed on a large area and a 110° beam angle produces a homogeneous light pattern
 - Colour temperature: 5,000 K
 - Ambient temperature: **-20 °C to +55 °C**
 - Ingress protection type: **IP66**
 - Mains adapter and driver are fitted in an extra housing on the floodlight housing for easy mounting
 - Diecast aluminium housing with **special paint**
 - High number of cooling ribs
 - The low weight of only 9.1 kg (aluminium housing) and strong mounting bracket including eye-bolts allows for easy and reliable ceiling or wall mounting. An additional safety wires with karabiner hooks are included
 - Connection is by a flexible cable with jacketed ends
- Perfect for providing even illumination of areas
 - Similar to daylight
 - Can be used indoors and outdoors, even under large temperature fluctuations
 - Proof against dust entry and protected against for powerful water jets
 - No negative interactions due to heating up
 - Optimised reduction of dust deposits on the surface
 - Excellent heat management - designed for long LED service life of up to 50,000 hours - **COST SAVING**
 - Double protection - double safety



– Other versions on request / subject to changes, E&OE –

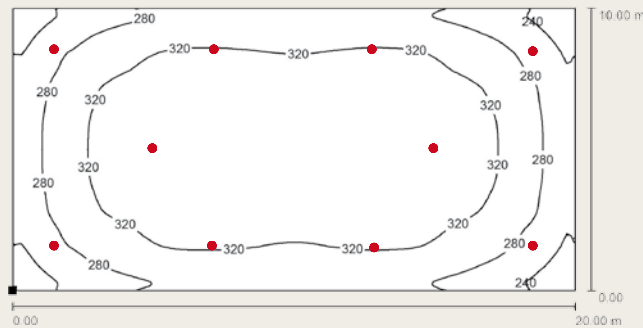
Light emission:



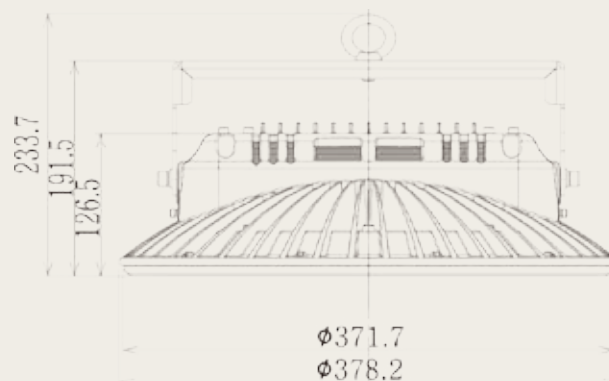
1.6	4.82	E(0°) E(CD)	56.4°	1855 158
3.2	9.63	E(0°) E(CD)	56.4°	464 39
4.8	14.45	E(0°) E(CD)	56.4°	206 18
6.4	19.27	E(0°) E(CD)	56.4°	116 10
8.0	24.08	E(0°) E(CD)	56.4°	74 6

Abstand [m] Kegeldurchmesser [m] Beleuchtungsstärke [lx]
— C0 - C180 (Halbstrahlwinkel: 112.8°)

Example from practice 10 SPACEJET 80 110°:



Room height: 8,00 m
Mounting height: 8,00 m
Maintenance factor: 0,80
Work plane: 0,85 m
 E_m : 309,00 Lux
 g_1 : 0,65



– Other versions on request / subject to changes, E&OE –

SPACEJET 2.0 120 110°

ELSPRO LED Floodlight with DALI Control

CE IP66  

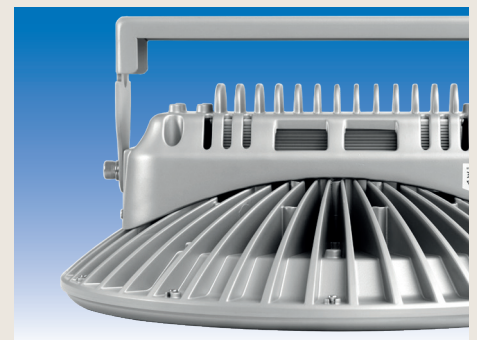


VERSIONS:

Voltage	Output	Lumen	R _a	Dimensions	Weight	Order No.
100 - 240 V AC 50 / 60 Hz	max. 120 W	19,200 160 lm / W	≥ 80	Ø: 378.2 mm H: 191.5 mm (Including bracket)	9.1 kg	ESJ2D120110

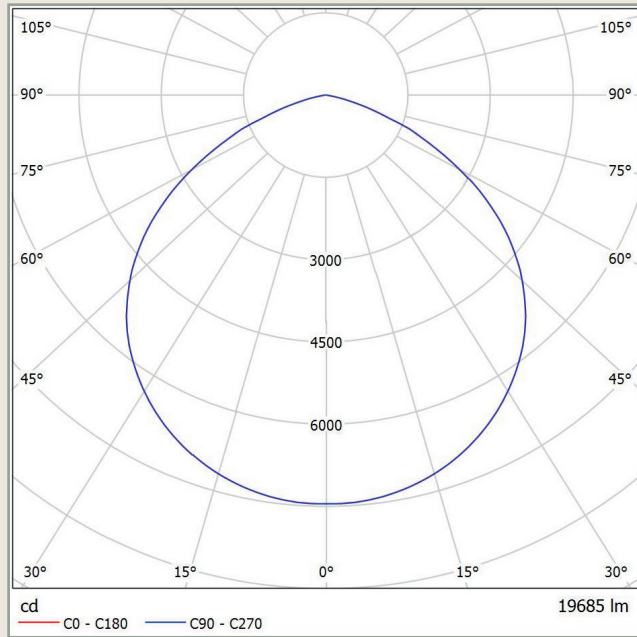
SPECIAL FEATURES:

- High-performance LED modules with 448 nodes evenly distributed on a large area and a 110° beam angle produces a homogeneous light pattern
 - Colour temperature: 5,000 K
 - Ambient temperature: **-20°C to +60°C**
 - Ingress protection type: **IP 66**
 - Mains adapter and driver are fitted in an extra housing on the floodlight housing for easy mounting
 - Diecast aluminium housing with **special paint**
 - High number of cooling ribs
 - The low weight of only 9.1 kg (aluminium housing) and strong mounting bracket including eye-bolts allows for easy and reliable ceiling or wall mounting. An additional safety wires with karabiner hooks are included
 - Connection is by a flexible cable with jacketed ends
 - With DALI control
- Perfect for providing even illumination of areas
 - Similar to daylight
 - Can be used indoors and outdoors, even under large temperature fluctuations
 - Proof against dust entry and protected against for powerful water jets
 - No negative interactions due to heating up
 - Optimised reduction of dust deposits on the surface
 - Excellent heat management - designed for long LED service life of up to 50,000 hours - COST SAVING
 - Double protection - double safety



– other models on request / subject to modification and errors –

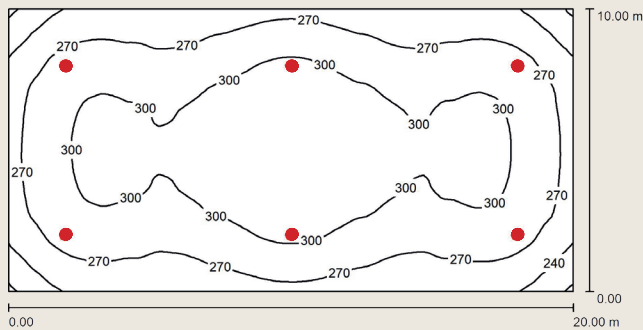
Light emission:



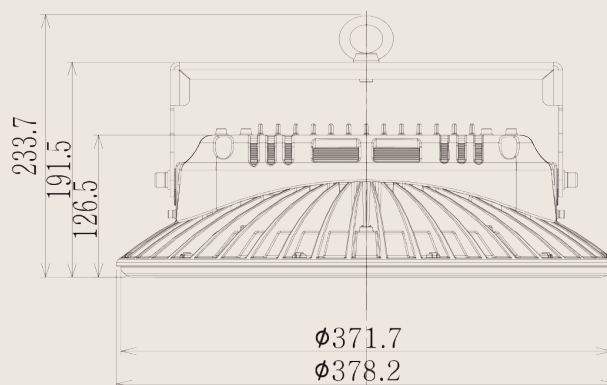
1.6	4.60	E(0°) E(C0)	2912 271
3.2	9.21	E(0°) E(C0)	728 68
4.8	13.81	E(0°) E(C0)	324 30
6.4	18.42	E(0°) E(C0)	182 17
8.0	23.02	E(0°) E(C0)	116 11

Abstand [m] Kegeldurchmesser [m] Beleuchtungsstärke [lx]
— C0 - C180 (Halbstrahlwinkel: 110.4°)

Example from practice 6 SPACEJET 120 110°:



Room height: 8.00 m
Mounting height 8.00 m
Maintenance factor: 0.80
Work plane 0.85 m
 E_m : 285.00 Lux
 g_1 : 0.73



– other models on request / subject to modification and errors –

SPACEJET 2.0 120 60°

ELSPRO LED Floodlight with DALI Control

CE IP66  



VERSIONS:

Voltage	Output	Lumen	R _a	Dimensions	Weight	Order No.
100 - 240 V AC 50 / 60 Hz	max. 120 W	15,600 130 lm / W	≥ 80	Ø: 378.2 mm H: 191.5 mm (Including bracket)	9.1 kg	ESJ2D120060

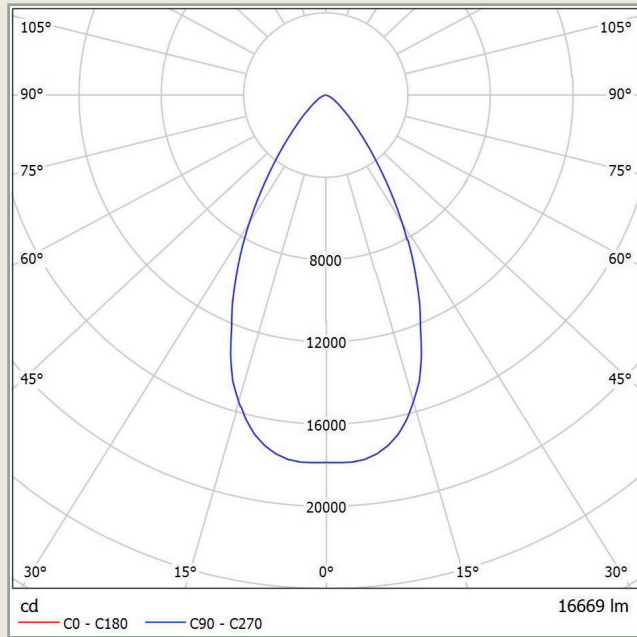
SPECIAL FEATURES:

- 48 high-performance LEDs with supplementary lenses and a 60° beam angle produces a focused light pattern
 - Colour temperature: 5,000 K
 - Ambient temperature: **-20°C to +60°C**
 - Ingress protection type: **IP 66**
 - Mains adapter and driver are fitted in an extra housing on the floodlight housing for easy mounting
 - Diecast aluminium housing with **special paint**
 - High number of cooling ribs
 - The low weight of only 9.1 kg (aluminium housing) and strong mounting bracket including eye-bolts allows for easy and reliable ceiling or wall mounting. An additional safety wires with karabiner hooks are included
 - Connection is by a flexible cable with jacketed ends
 - With DALI control
- For providing focused illumination of areas from a great height
 - Similar to daylight
 - Can be used indoors and outdoors, even under large temperature fluctuations
 - Proof against dust entry and protected against for powerful water jets
 - No negative interactions due to heating up
 - Optimised reduction of dust deposits on the surface
 - Excellent heat management - designed for long LED service life of up to 50,000 hours - **COST SAVING**
 - Double protection - double safety



– other models on request / subject to modification and errors –

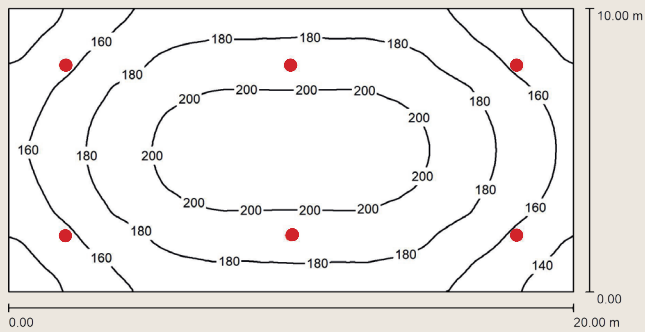
Light emission:



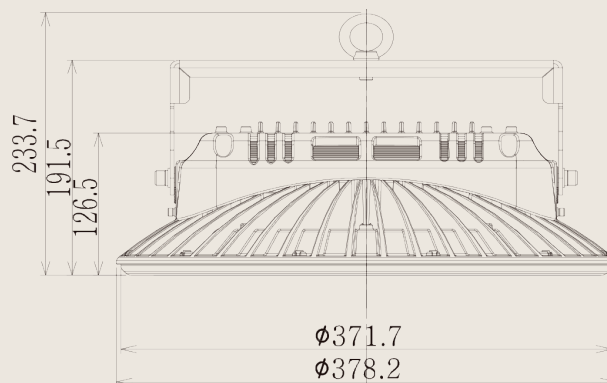
3.6	3.80	E(0°) E(C0)	27.8°	1379 479
7.2	7.59	E(0°) E(C0)	27.8°	345 120
10.8	11.39	E(0°) E(C0)	27.8°	153 53
14.4	15.18	E(0°) E(C0)	27.8°	86 30
18.0	18.98	E(0°) E(C0)	27.8°	55 19

Abstand [m] Kegeldurchmesser [m] Beleuchtungsstärke [lx]
— C0 - C180 (Halbstrahlwinkel: 55.6°)

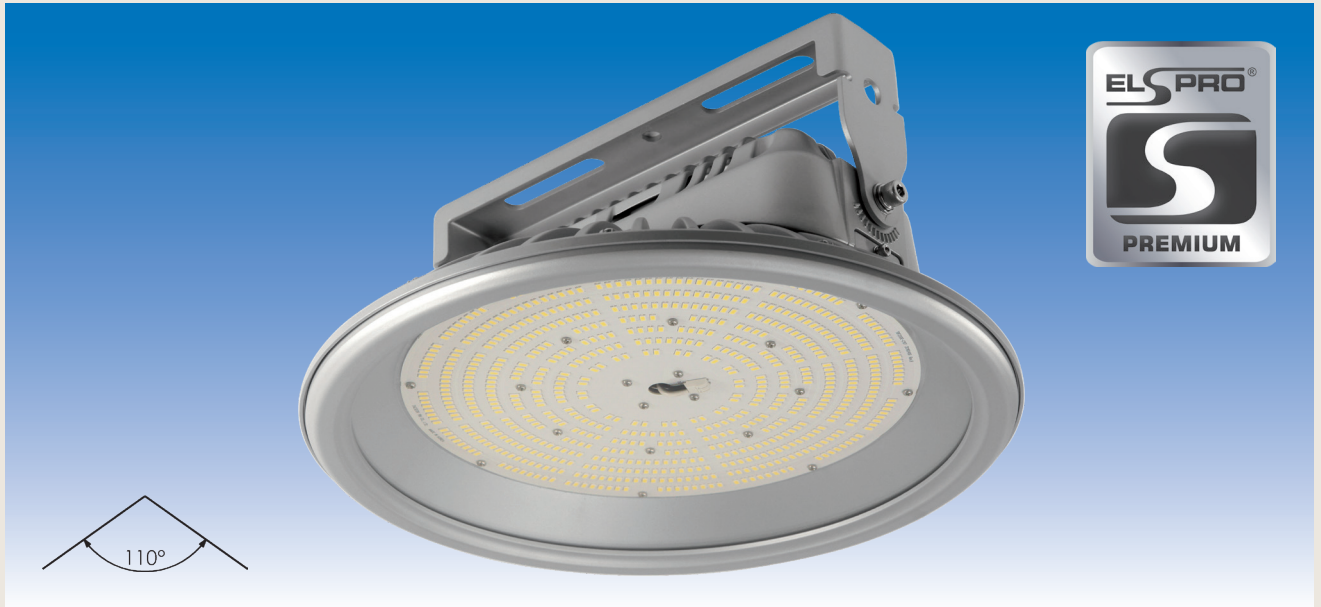
Example from practice 6 SPACEJET 120 60°:



Room height:	18,00 m
Mounting height	18,00 m
Maintenance factor:	0,80
Work plane	0,85 m
E_m :	178,00 Lux
g_1 :	0,72



– other models on request / subject to modification and errors –



VERSIONS:

Voltage	Output	Lumen	R _a	Dimensions	Weight	Order No.
100 - 240 V AC 50 / 60 Hz	max. 200 W	32,000 160 lm / W	≥ 80	Ø: 378.2 mm H: 191.5 mm (Including bracket)	9.1 kg	ESJ2D200110

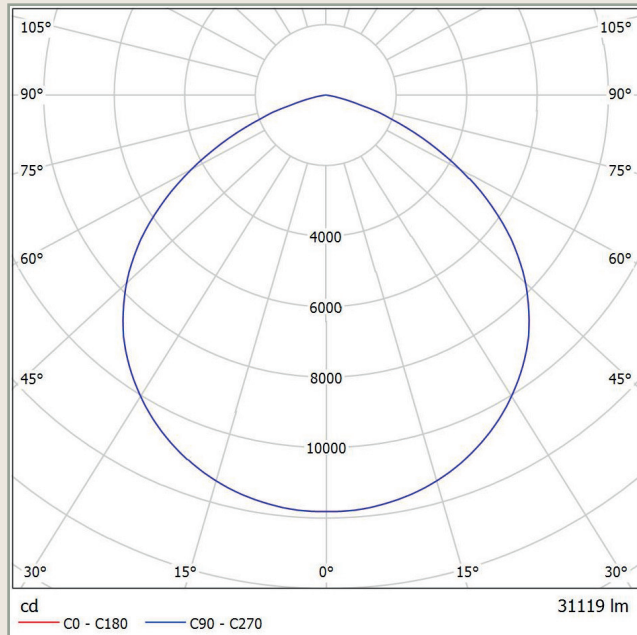
SPECIAL FEATURES:

- High-performance LED modules with 704 nodes evenly distributed on a large area and a 110° beam angle produces a homogeneous light pattern
 - Colour temperature: 5,000 K
 - Ambient temperature: **-20°C to +60°C**
 - Ingress protection type: **IP 66**
 - Mains adapter and driver are fitted in an extra housing on the floodlight housing for easy mounting
 - Diecast aluminium housing with **special paint**
 - High number of cooling ribs
 - The low weight of only 9.1 kg (aluminium housing) and strong mounting bracket including eye-bolts allows for easy and reliable ceiling or wall mounting. An additional safety wires with karabiner hooks are included
 - Connection is by a flexible cable with jacketed ends
 - With DALI control
- Perfect for providing even illumination of areas
 - Similar to daylight
 - Can be used indoors and outdoors, even under large temperature fluctuations
 - Proof against dust entry and protected against for powerful water jets
 - No negative interactions due to heating up
 - Optimised reduction of dust deposits on the surface
 - Excellent heat management - designed for long LED service life of up to 50,000 hours - COST SAVING
 - Double protection - double safety



– other models on request / subject to modification and errors –

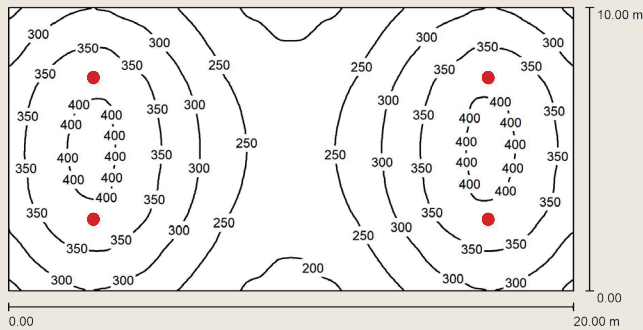
Light emission:



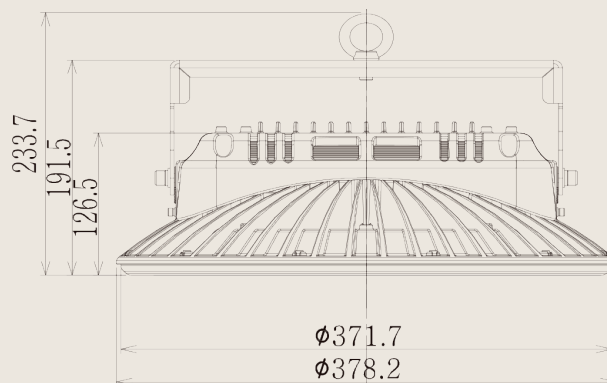
1.6	4.57	E(0°) E(C0)	55.0°	4616 437
3.2	9.14	E(0°) E(C0)	55.0°	1154 109
4.8	13.71	E(0°) E(C0)	55.0°	513 49
6.4	18.28	E(0°) E(C0)	55.0°	288 27
8.0	22.85	E(0°) E(C0)	55.0°	185 17

Abstand [m] Kegeldurchmesser [m] Beleuchtungsstärke [lx]
— C0 - C180 (Halbstreuwinkel: 110.0°)

Example from practice 4 SPACEJET 200 110°:



Room height: 8,00 m
Mounting height 8,00 m
Maintenance factor: 0,80
Work plane 0,85 m
 E_m : 321,00 Lux
 g_1 : 0,65



– other models on request / subject to modification and errors –



VERSIONS:

Voltage	Output	Lumen	R _a	Dimensions	Weight	Order No.
100 - 240 V AC 50 / 60 Hz	max. 200 W	26,000 130 lm / W	≥ 80	Ø: 378.2 mm H: 191.5 mm (Including bracket)	9.1 kg	ESJ2D200060

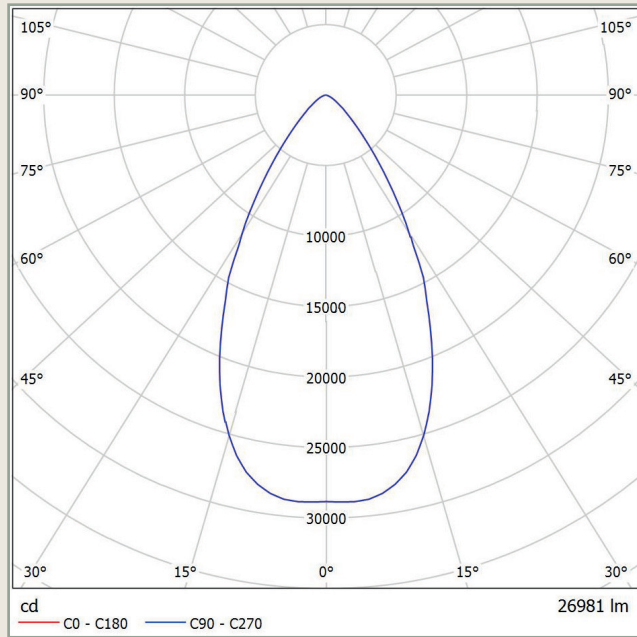
SPECIAL FEATURES:

- 80 high-performance LEDs with supplementary lenses and a 60° beam angle produces a focused light pattern
- Colour temperature: 5,000 K
- Ambient temperature: **-20°C to +60°C**
- Ingress protection type: **IP 66**
- Mains adapter and driver are fitted in an extra housing on the floodlight housing for easy mounting
- Diecast aluminium housing with **special paint**
- High number of cooling ribs
- The low weight of only 9.1 kg (aluminium housing) and strong mounting bracket including eye-bolts allows for easy and reliable ceiling or wall mounting. An additional safety wires with karabiner hooks are included
- Connection is by a flexible cable with jacketed ends
- With DALI control
- For providing focused illumination of areas from a great height
- Similar to daylight
- Can be used indoors and outdoors, even under large temperature fluctuations
- Proof against dust entry and protected against for powerful water jets
- No negative interactions due to heating up
- Optimised reduction of dust deposits on the surface
- Excellent heat management - designed for long LED service life of up to 50,000 hours - **COST SAVING**
- Double protection - double safety



– other models on request / subject to modification and errors –

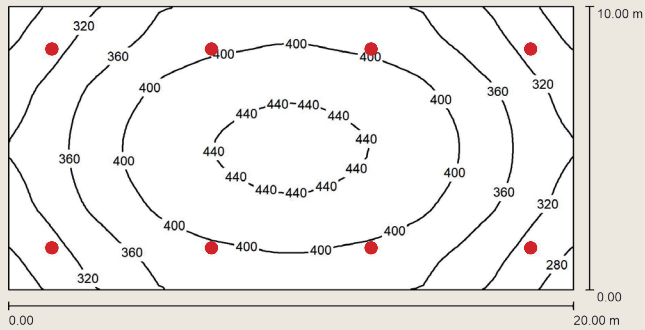
Light emission:



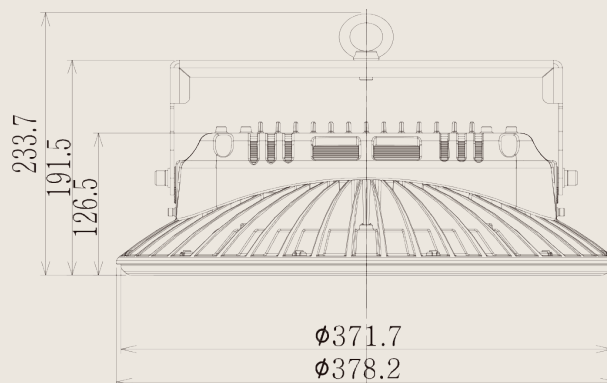
3.6	3.84	E(0°) E(C0)	28.1°	2225 770
7.2	7.69	E(0°) E(C0)	28.1°	556 193
10.8	11.53	E(0°) E(C0)	28.1°	247 86
14.4	15.38	E(0°) E(C0)	28.1°	139 48
18.0	19.22	E(0°) E(C0)	28.1°	89 31

Abstand [m] Kegeldurchmesser [m] Beleuchtungsstärke [lx]
C0 - C180 (Halbstrahlwinkel: 56.2°)

Example from practice 8 SPACEJET 200 60°:





Room height: 18,00 m
Mounting height 18,00 m
Maintenance factor: 0,80
Work plane 0,85 m
 E_m : 376,00 Lux
 g_1 : 0,71



– other models on request / subject to modification and errors –

SPACEJET 280 110°

ELSPRO LED Floodlight with DALI Control

CE IP66  



VERSIONS:

Voltage	Output	Lumen	R _a	Dimensions	Weight	Order No.
100 - 240 V AC 50 / 60 Hz	max. 280 W	42,000 150 lm / W	≥ 80	Ø: 484.7 mm H: 279.7 mm (Including bracket)	16.7 kg	ESJD280110

SPECIAL FEATURES:


- High-performance LED modules with 1.024 nodes evenly distributed on a large area and a 110° beam angle produces a homogeneous light pattern
 - Colour temperature: 5,000 K
 - Ambient temperature: **-20 °C to +55 °C**
 - Ingress protection type: **IP66**
 - Mains adapter and driver are fitted in an extra housing on the floodlight housing for easy mounting
 - Diecast aluminium housing with **special paint**
 - High number of cooling ribs
 - The low weight of only 16.7 kg (aluminium housing) and strong mounting bracket including eye-bolts allows for easy and reliable ceiling or wall mounting. An additional safety wires with karabiner hooks are included
 - Connection is by a flexible cable with jacketed ends
 - With DALI control
- Perfect for providing even illumination of areas
 - Similar to daylight
 - Can be used indoors and outdoors, even under large temperature fluctuations
 - Proof against dust entry and protected against for powerful water jets
 - No negative interactions due to heating up
 - Optimised reduction of dust deposits on the surface
 - Excellent heat management - designed for long LED service life of up to 50,000 hours - COST SAVING
 - Double protection - double safety



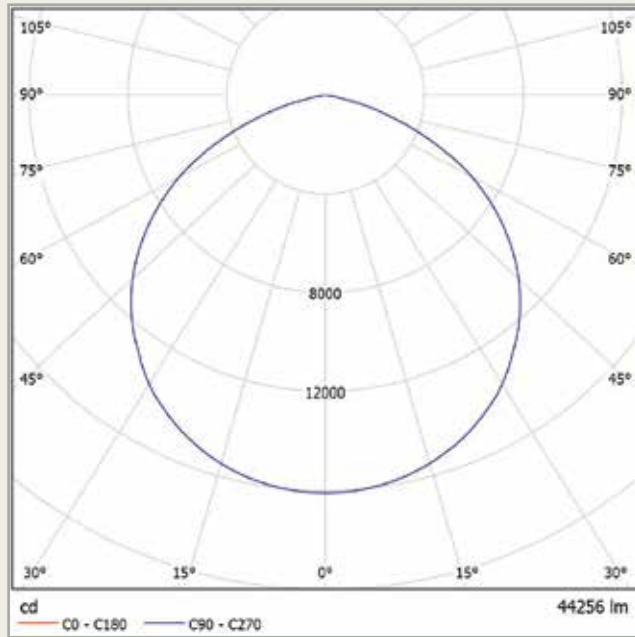
– Other versions on request / subject to changes, E&OE –

SPACEJET 280 110°

ELSPRO LED Floodlight with DALI Control

CE IP66  

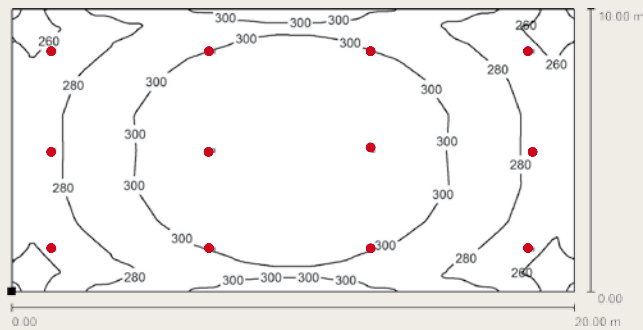
Light emission:



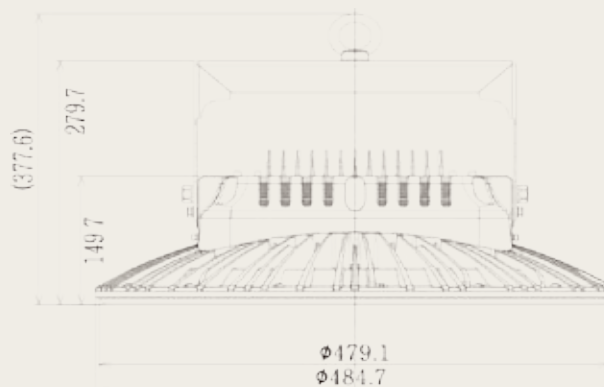
4.0	12.13	E(0°)	1006
		E(C0)	84
8.0	24.27	E(0°)	252
		E(C0)	21
12.0	36.40	E(0°)	112
		E(C0)	9
16.0	48.53	E(0°)	63
		E(C0)	5
20.0	60.66	E(0°)	40
		E(C0)	3
24.0	72.80	E(0°)	28
		E(C0)	2
28.0	84.93	E(0°)	21
		E(C0)	2

Abstand [m] Kegeldurchmesser [m] Beleuchtungsstärke [lx]
 C0 - C180 (Halbstreuwinkel: 113.2°)

Example from practice 12 SPACEJET 280 110°:





Room height: 28,00 m
 Mounting height 28,00 m
 Maintenance factor: 0,80
 Work plane 0,85 m
 E_m : 293,00 Lux
 g_1 : 0,85



– Other versions on request / subject to changes, E&OE –

SPACEJET 300 60°

ELSPRO LED Floodlight with DALI Control

CE IP66  



VERSIONS:

Voltage	Output	Lumen	R _a	Dimensions	Weight	Order No.
100 - 240 V AC 50 / 60 Hz	max. 300 W	36,000 120 lm / W	≥ 80	Ø: 484.7 mm H: 279.7 mm (Including bracket)	16.7 kg	ESJD300060

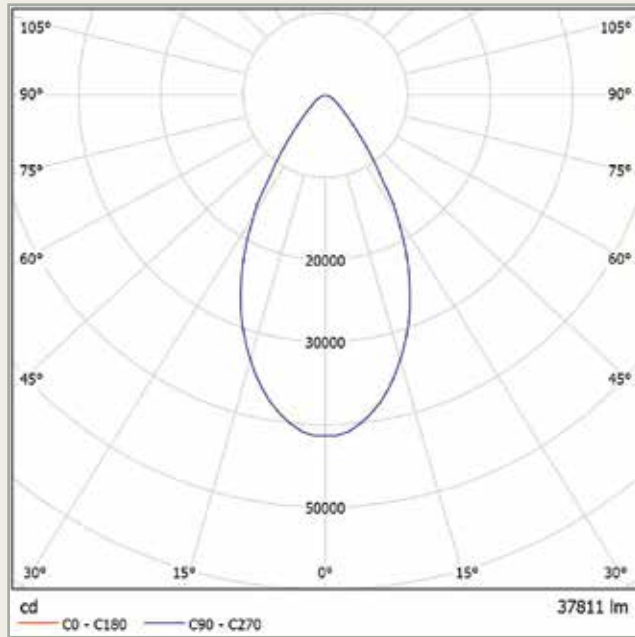
SPECIAL FEATURES:

- 128 high-performance LEDs with supplementary lenses and a 60° beam angle produces a focused light pattern
 - Colour temperature: 5,000 K
 - Ambient temperature: **-20 °C to +55 °C**
 - Ingress protection type: **IP66**
 - Mains adapter and driver are fitted in an extra housing on the floodlight housing for easy mounting
 - Diecast aluminium housing with **special paint**
 - High number of cooling ribs
 - The low weight of only 16.7 kg (aluminium housing) and strong mounting bracket including eye-bolts allows for easy and reliable ceiling or wall mounting. An additional safety wires with karabiner hooks are included
 - Connection is by a flexible cable with jacketed ends
 - With DALI control
- For providing focused illumination of areas from a great height
 - Similar to daylight
 - Can be used indoors and outdoors, even under large temperature fluctuations
 - Proof against dust entry and protected against for powerful water jets
 - No negative interactions due to heating up
 - Optimised reduction of dust deposits on the surface
 - Excellent heat management - designed for long LED service life of up to 50,000 hours - COST SAVING
 - Double protection - double safety



– Other versions on request / subject to changes, E&OE –

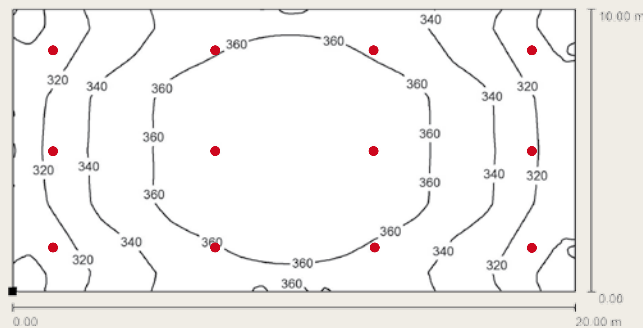
Light emission:



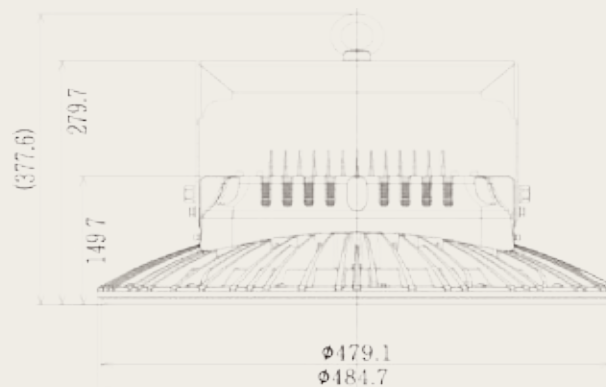
5.0	5.27	E(0°)	1653
		E(C0)	575
10.0	10.54	E(0°)	413
		E(C0)	144
15.0	15.82	E(0°)	184
		E(C0)	64
20.0	21.09	E(0°)	103
		E(C0)	36
25.0	26.36	E(0°)	66
		E(C0)	23
30.0	31.63	E(0°)	46
		E(C0)	16
35.0	36.91	E(0°)	34
		E(C0)	12

Abstand [m] Kegeldurchmesser [m] Beleuchtungsstärke [lx]
 C0 - C180 (Halbstrahlwinkel: 55,6°)

Example from practice 12 SPACEJET 300 60°:





Room height: 35,00 m
 Mounting height 35,00 m
 Maintenance factor: 0,80
 Work plane 0,85 m
 E_m : 346,00 Lux
 g_1 : 0,83



– Other versions on request / subject to changes, E&OE –

SPACEJET 360 110°

ELSPRO LED Floodlight with DALI Control

CE IP66  



VERSIONS:

Voltage	Output	Lumen	R _a	Dimensions	Weight	Order No.
100 - 240 V AC 50 / 60 Hz	max. 360 W	54,000 150 lm / W	≥ 80	Ø: 484.7 mm H: 279.7 mm (Including bracket)	16.7 kg	ESJD360110

SPECIAL FEATURES:


- High-performance LED modules with 1.280 nodes evenly distributed on a large area and a 110° beam angle produces a homogeneous light pattern
 - Colour temperature: 5,000 K
 - Ambient temperature: **-20 °C to +55 °C**
 - Ingress protection type: **IP66**
 - Mains adapter and driver are fitted in an extra housing on the floodlight housing for easy mounting
 - Diecast aluminium housing with **special paint**
 - High number of cooling ribs
 - The low weight of only 16.7 kg (aluminium housing) and strong mounting bracket including eye-bolts allows for easy and reliable ceiling or wall mounting. An additional safety wires with karabiner hooks are included
 - Connection is by a flexible cable with jacketed ends
 - With DALI control
- Perfect for providing even illumination of areas
 - Similar to daylight
 - Can be used indoors and outdoors, even under large temperature fluctuations
 - Proof against dust entry and protected against for powerful water jets
 - No negative interactions due to heating up
 - Optimised reduction of dust deposits on the surface
 - Excellent heat management - designed for long LED service life of up to 50,000 hours - COST SAVING
 - Double protection - double safety



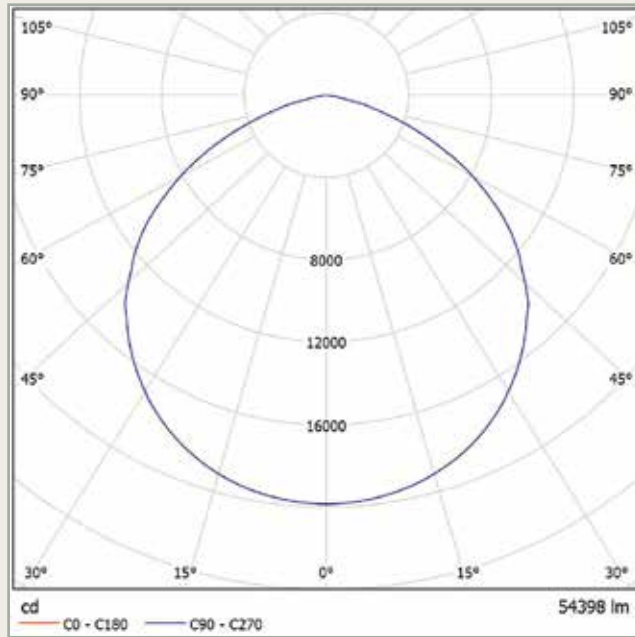
– Other versions on request / subject to changes, E&OE –

SPACEJET 360 110°

ELSPRO LED Floodlight with DALI Control

CE IP66  

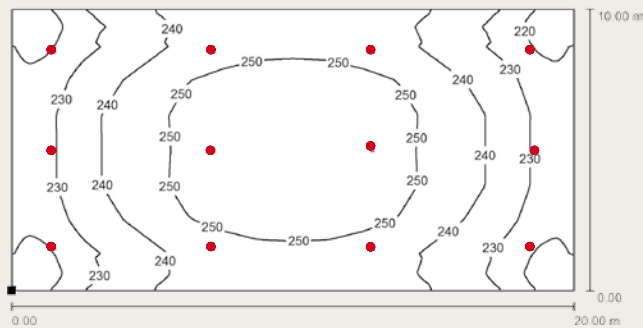
Light emission:



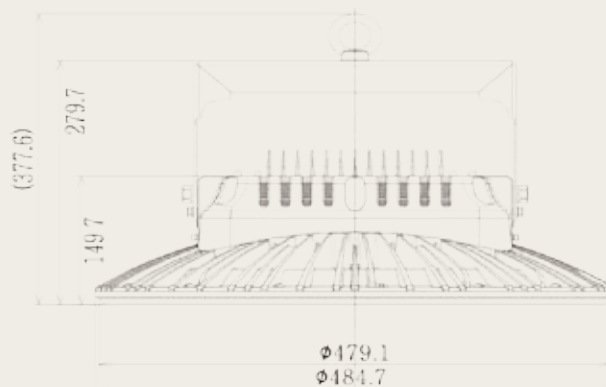
Abstand [m]	Kegeldurchmesser [m]	E(0°)	E(C0)	Beleuchtungsstärke [lx]
5.0	15.05	E(0°)	E(C0)	794 68
10.0	30.10	E(0°)	E(C0)	199 17
15.0	45.15	E(0°)	E(C0)	88 8
20.0	60.20	E(0°)	E(C0)	50 4
25.0	75.26	E(0°)	E(C0)	32 3
30.0	90.31	E(0°)	E(C0)	22 2
35.0	105.36	E(0°)	E(C0)	16 1

— C0 - C180 (Halbstrahlwinkel: 112.8°)

Example from practice 12 SPACEJET 360 110°:



Room height: 35,00 m
 Mounting height 35,00 m
 Maintenance factor: 0,80
 Work plane 0,85 m
 E_m : 241,00 Lux
 g_1 : 0,87



– Other versions on request / subject to changes, E&OE –



VERSIONS:

Voltage	Output	Lumen	R _a	Dimensions	Weight	Order No.
100 - 240 V AC 50 / 60 Hz	max. 380 W	49,400 130 lm / W	≥ 80	Ø: 484.7 mm H: 279.7 mm (Including bracket)	16.7 kg	ESJ2D380060

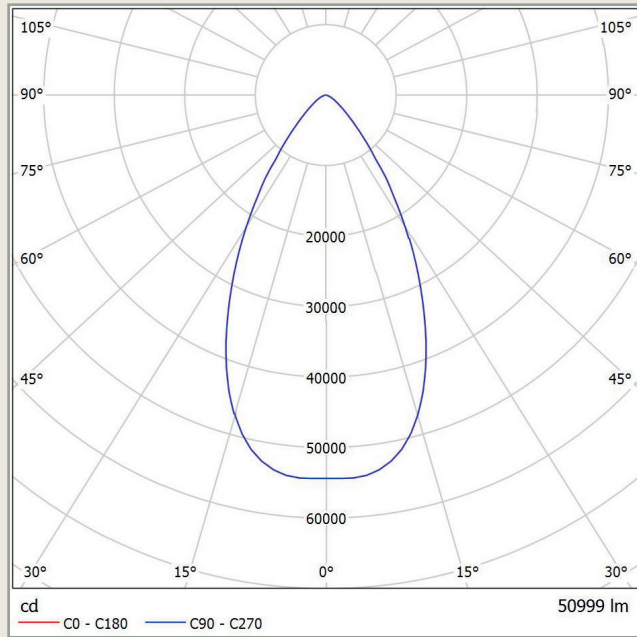
SPECIAL FEATURES:

- 160 high-performance LEDs with supplementary lenses and a 60° beam angle produces a focused light pattern
- Colour temperature: 5,000 K
- Ambient temperature: **-20°C to +55°C**
- Ingress protection type: **IP 66**
- Mains adapter and driver are fitted in an extra housing on the floodlight housing for easy mounting
- Diecast aluminium housing with **special paint**
- High number of cooling ribs
- The low weight of only 16.7 kg (aluminium housing) and strong mounting bracket including eye-bolts allows for easy and reliable ceiling or wall mounting. An additional safety wires with karabiner hooks are included
- Connection is by a flexible cable with jacketed ends
- With DALI control
- For providing focused illumination of areas from a great height
- Similar to daylight
- Can be used indoors and outdoors, even under large temperature fluctuations
- Proof against dust entry and protected against for powerful water jets
- No negative interactions due to heating up
- Optimised reduction of dust deposits on the surface
- Excellent heat management - designed for long LED service life of up to 50,000 hours - COST SAVING
- Double protection - double safety



– other models on request / subject to modification and errors –

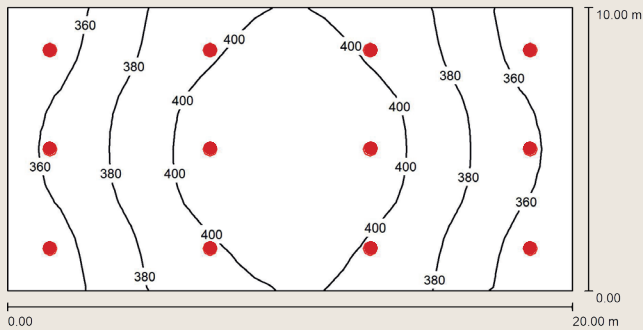
Light emission:



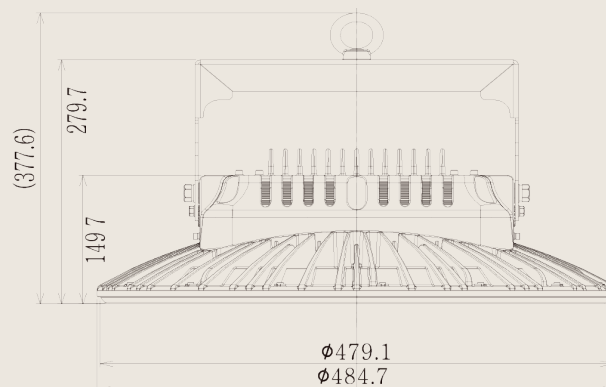
8.0	8.44	E(0°) E(C0)	27.8°	849 296
16.0	16.87	E(0°) E(C0)	27.8°	212 74
24.0	25.31	E(0°) E(C0)	27.8°	94 33
32.0	33.74	E(0°) E(C0)	27.8°	53 19
40.0	42.18	E(0°) E(C0)	27.8°	34 12

Abstand [m] Kegeldurchmesser [m] Beleuchtungsstärke [lx]
— C0 - C180 (Halbstreuwinkel: 55.6°)

Example from practice 12 SPACEJET 380 60°:



Room height: 40,00 m
Mounting height 40,00 m
Maintenance factor: 0,80
Work plane 0,85 m
 E_m : 383,00 Lux
 g_1 : 0,89



– other models on request / subject to modification and errors –