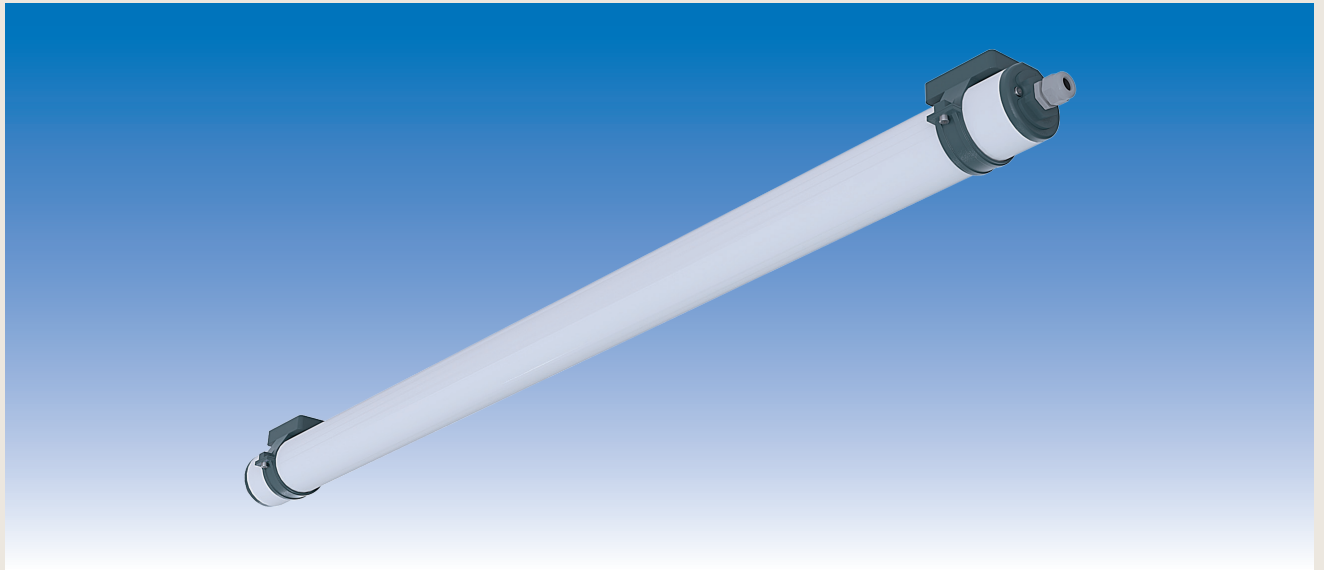


# LED Surface Light AQUA-70-LED



## MODELS:

Voltage	Power	Luminous flux	T <sub>a</sub> max	Dimensions	Weight	Order no.
230 V AC	17 W	1,903 lm	≤+50°C	780 x Ø 70 mm	1.6 kg	<b>AQUA-084130</b>
	35 W	3,806 lm	≤+40°C	1,270 x Ø 70 mm	2.4 kg	<b>AQUA-084131</b>
	52 W	5,709 lm		1,740 x Ø 70 mm	3.1 kg	<b>AQUA-084132</b>

- Models with emergency power or dimming function on request -

## SPECIAL FEATURES:

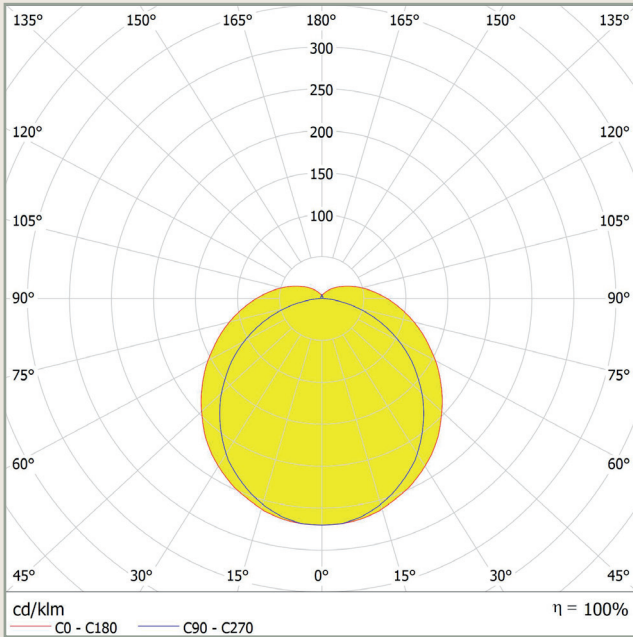
- High-power LED with up to 112 lm/W.
- Light colour 4,000 K.
- CRI +80
- Power factor 0.98
- Lifetime L80B10 TA30 - up to 70,000 hours
- Polycarbonate tube with 4 mm wall thickness
- Direct mounting using mounting clamps (not included) or suspension
- Cable gland M20
- Protection class I.
- IP 69
- Ambient temperature: -20°C ≤ T<sub>a</sub> ≤ see table
- Optionally with single-phase or three-phase through-wiring
- High light output
- Neutral white (2,700 - 6,500 K on request)
- High colour rendering index
- Proven longevity
- IK10, resistant to mechanical stress (protection against impacts with an impact energy of up to 20 joules)
- Easy installation on the ceiling or wall of the room to be illuminated
- Line diameter of 6-13 mm
- Dust and waterproof
- Use at elevated ambient temperatures and large temperature fluctuations

- Further models on request / subject to change and error -

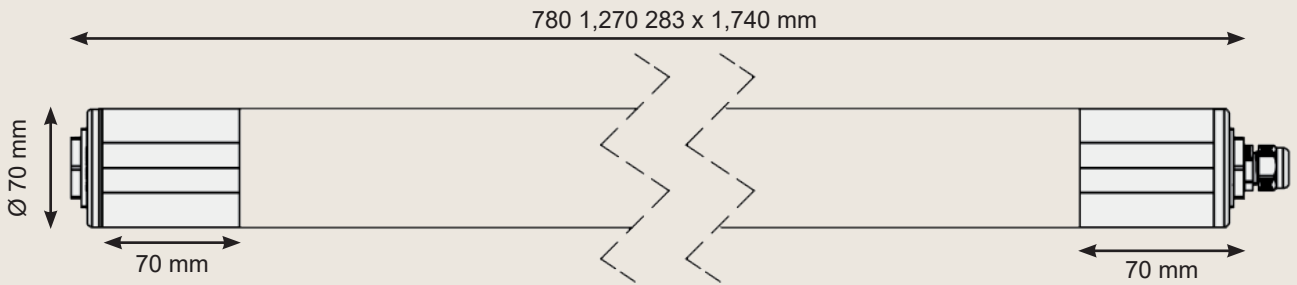
# LED Surface Light AQUA-70-LED



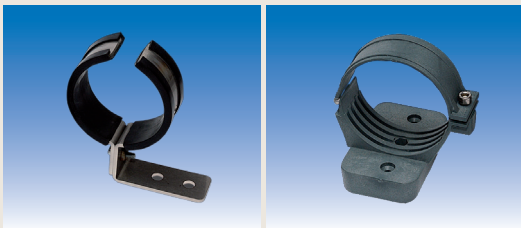
## LIGHT EMISSION:



## DIMENSIONS:



## ACCESSORIES:



Mounting clamps  
stainless steel (2 pcs.)

**EXV009/SET**

Mounting clamps  
plastic dark grey  
(2 pcs.)

**EXV010/SET**

– Further models on request / subject to change and error –