



## MODELS:

Voltage	Power	Luminous flux	T <sub>a</sub> max	Dimensions	Weight	Order no.
230 V AC	8 W	1,088 lm	≤+40°C	670 155 283 x 105 mm	1.4 kg	EXTRA-055186
	16 W	2,175 lm				EXTRA-055187
	33 W	4,305 lm				EXTRA-055188
	17 W	2,224 lm	≤+45°C*	1,280 155 283 x 105 mm	2.3 kg	EXTRA-055183
	33 W	4,449 lm	≤+40°C*			EXTRA-055182
	66 W	8,611 lm	≤+40°C			EXTRA-055184
	25 W	3,337 lm	≤+45°C*	1,580 155 283 x 105 mm	2.9 kg	EXTRA-055181
	50 W	6,675 lm				EXTRA-055180
	80 W	10,777 lm	≤+40°C	1,580 155 283 x 105 mm	3.2 kg	EXTRA-055185
	94 W	13,730 lm				EXTRA-055228-NSP
	115 W	16,311 lm				EXTRA-055240-NSP

\* Optionally available as model with stainless steel clips and ambient temperature ≤+50°C - Models with emergency power or dimming function on request -

## SPECIAL FEATURES:

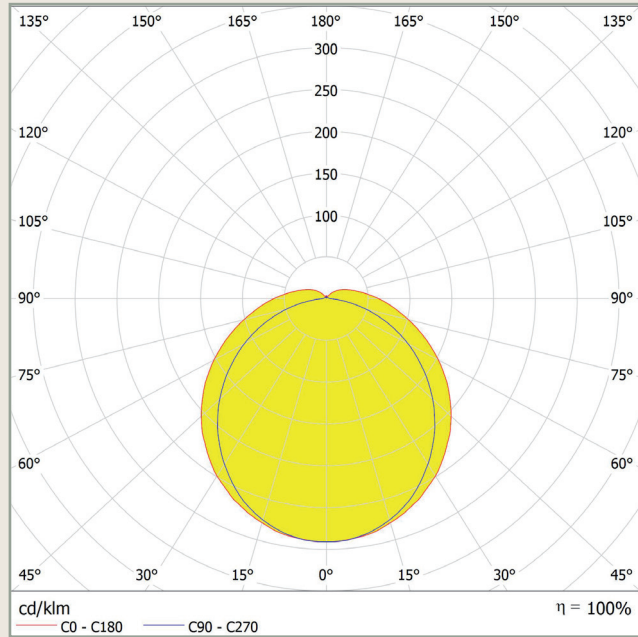
- High-power LED with up to 136 lm/W.
- Light colour 4,000 K.
- CRI +80
- Power factor 0.98
- Lifetime L80B10 TA30 - up to 70,000 hours
- Polycarbonate housing and cover
- Direct mounting via two mounting brackets (included) or alternatively two wall mounting brackets, suspension via chain or cable suspension or mounting for outriggers
- Cable gland M20
- Protection class I.
- IP 66
- Ambient temperature: -25°C ≤ T<sub>a</sub> ≤ see table
- Optionally with single-phase or three-phase through-wiring
- High light output
- Neutral white (2,700 K - 6,500 K on request)
- High colour rendering index
- Proven longevity
- IK10, resistant to mechanical stress (protection against impacts with an impact energy of up to 20 joules)
- Easy installation on the ceiling or wall of the room to be illuminated
- Line diameter of 7-12 mm
- Dust and splash protection
- Use at elevated ambient temperatures and large temperature fluctuations

– Further models on request / subject to change and error –

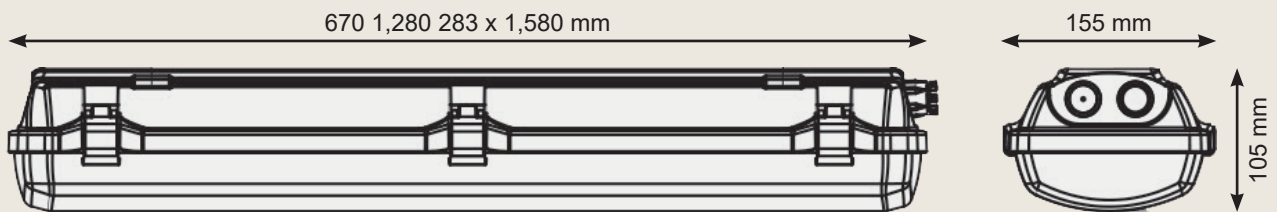
# LED Trough Light EXTRA-LED



## LIGHT EMISSION:



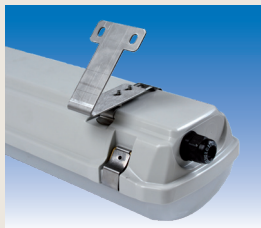
## DIMENSIONS:



## ACCESSORIES:



Wire hanger set (2 pcs) for chain suspension (without chain)  
**EXV005/SET**



Set of 45° metal brackets for wall mounting (2 pcs.)  
**EXV006**



Self-locking cable suspension (2 pcs. à 3 m)  
**EXV007**



Clamp set (2 pcs.) for mounting on a boom with Ø 50 mm  
**EXV008/SET**

– Further models on request / subject to change and error –