

ALFLED



ELSPRO[®]

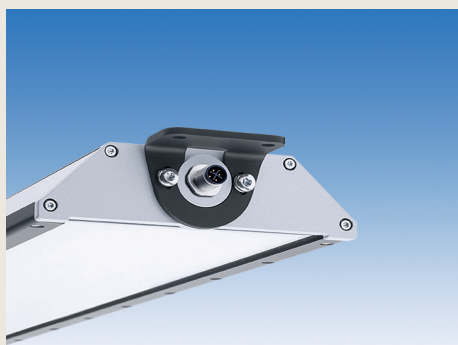


First select the type of mounting you require.

Your order then consists of:

REQUIRED MOUNTING BRACKET
+ SELECTED ALFLED VERSIONS
+ SELECTED CONNECTION TYPE

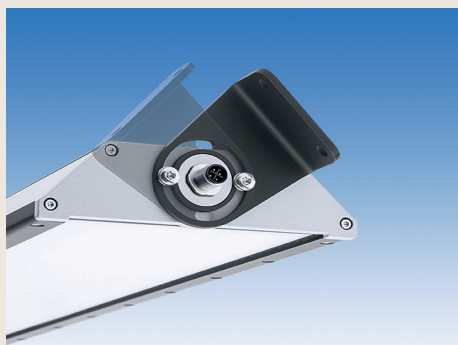
Order No.:



Lateral mounting brackets for wall or ceiling mounting, close-fitting

163-410

Set consisting of 2 black-anodised aluminium mounting brackets, including attachment fittings for fastening to the ALFLED



Lateral mounting brackets for corner or ceiling mounting, 90° tilting

163-411

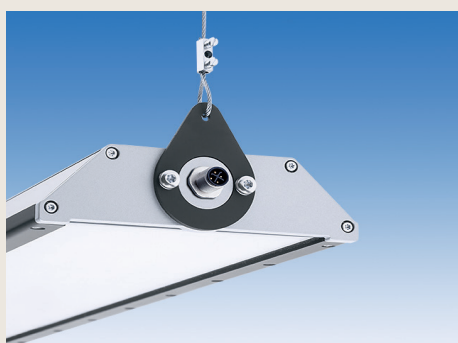
Set consisting of 2 black-anodised aluminium mounting brackets, including attachment fittings for fastening to the ALFLED



Lateral mounting brackets for wall mounting, +/- 45° tilting

163-412

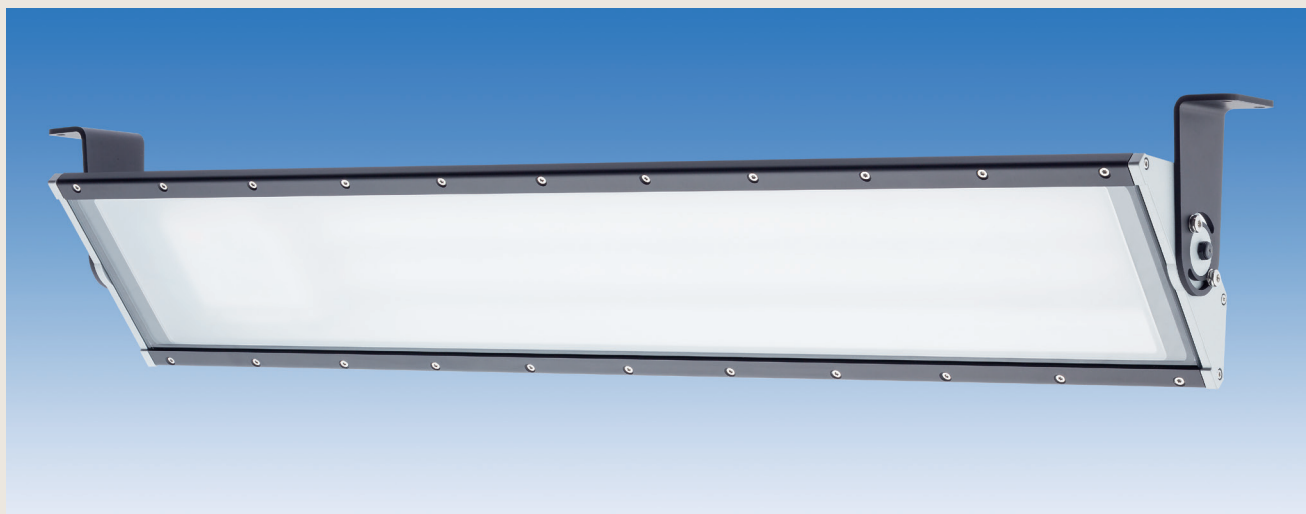
Set consisting of 2 black-anodised aluminium mounting brackets, including attachment fittings for fastening to the ALFLED



Lateral mounting lugs for suspending ceiling-mounted ALFLED

163-413

Set consisting of 2 black-anodised aluminium mounting brackets, including attachment fittings for fastening to the ALFLED and 2 wire ropes with attachment kit


VERSIONS:

- models with two led panels, diffuser and tempered front glass

Lamp	Output	Luminous flux	R _a	Beam angle	Length in mm	Order No. 24 V DC	Order No. 230 V AC
Mid-Power LED 2 LED panels	26 W	3,017 lm	> 80	100°/100°	586 mm	7A242615	7A232615
	52 W	6,405 lm			866 mm	7A245215	7A235215
	78 W	9,664 lm			1,276 mm	7A247815	7A237815
	104 W	12,958 lm			1,556 mm	7A2410415	7A2310415

		Illumination (lx)			
		104 W	78 W	52 W	26 W
	E(0°)	5.362	3.998	2.657	1.253
	E(C90)	51,2°	486	338	165
	E(0)	763	573	375	177
	E(0°)	1.340	999	664	313
	E(C90)	51,2°	122	84	41
	E(0)	164	143	94	44
	E(0°)	596	444	295	139
	E(C90)	51,2°	73	54	18
	E(0)	85	64	42	20
	E(0°)	335	250	166	78
	E(C90)	51,2°	41	30	10
	E(0)	48	36	23	11
	E(0°)	214	160	106	50
	E(C90)	51,2°	26	19	7
	E(0)	31	23	15	7
	E(0°)	149	111	74	35
	E(C90)	51,2°	18	14	5
	E(0)	21	16	10	5

CONNECTION TYPES:

Cable connector* (coupling)	Cable	Order No. 24 V DC	Order No. 230 V AC
		T-coded	S-coded
	No cable	160-800	160-900
	5 m	160-805	-
	INDUSTRIEFLEX® 07HT 2x1,0 mm ²	160-805G	-
	ELSPRO-FLEX® G 05 2x1,0 mm ²	-	160-9E5
	INDUSTRIEFLEX® 07HT 3G1,0 mm ²	-	160-9E5G

* Angled cable connector on request

– other models on request / subject to modification and errors –

ALFLED

Aluminium Area Lamp LED

ALTERNATIVE VERSIONS

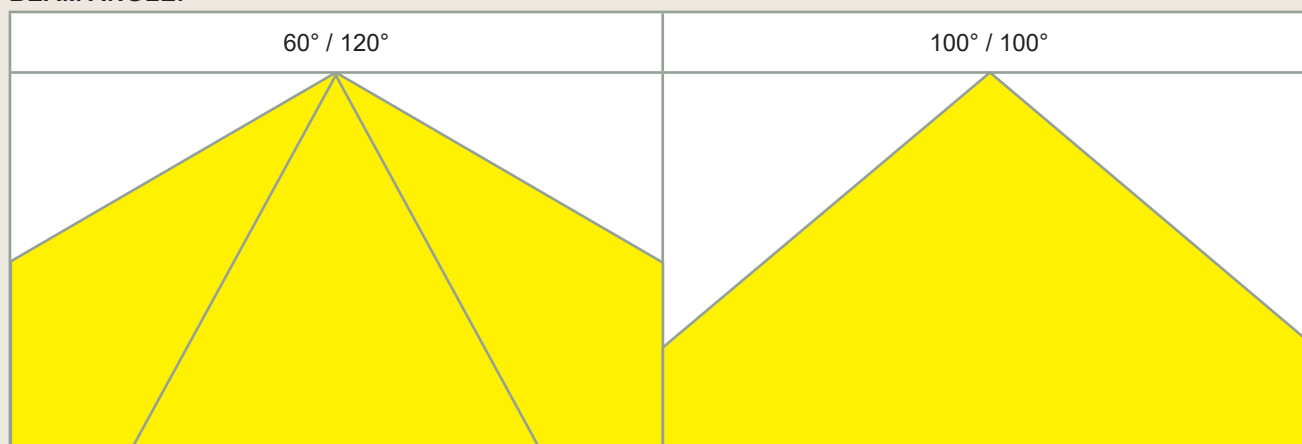
ASK US FOR YOUR SPECIFIC VARIANT:

1,508 lm	3,017 lm		4,832 lm	6,405 lm		9,664 lm	12,958 lm
13 W	26 W		39 W	52 W		78 W	104 W
1 LED PANEL	1 LED PANEL	2 LED PANELS	1 LED PANEL	1 LED PANEL	2 LED PANELS	2 LED PANELS	2 LED PANELS
586 mm	866 mm	586 mm	1,276 mm	1,556 mm	866 mm	1,276 mm	1,556 mm

POWER SUPPLY:

24 V DC	230 V AC
---------	----------

BEAM ANGLE:



FRONT GLASS:

TEMPERED GLASS	POLYCARBONATE	COLOURED POLYCARBONATE
----------------	---------------	------------------------

DIMMABILITY:

NON-DIMMABLE (STANDARD)	DIMMABLE
-------------------------	----------

WIRING:

STANDARD	FOR CONNECTING IN SERIES*
----------	---------------------------

Plug 24 V DC T-coded **160-801**
Plug 230 V AC S-coded **160-700**
assembled connecting cables on demand

* The following combinations are technically not possible: DIMMABLE and CONNECTING IN SERIES

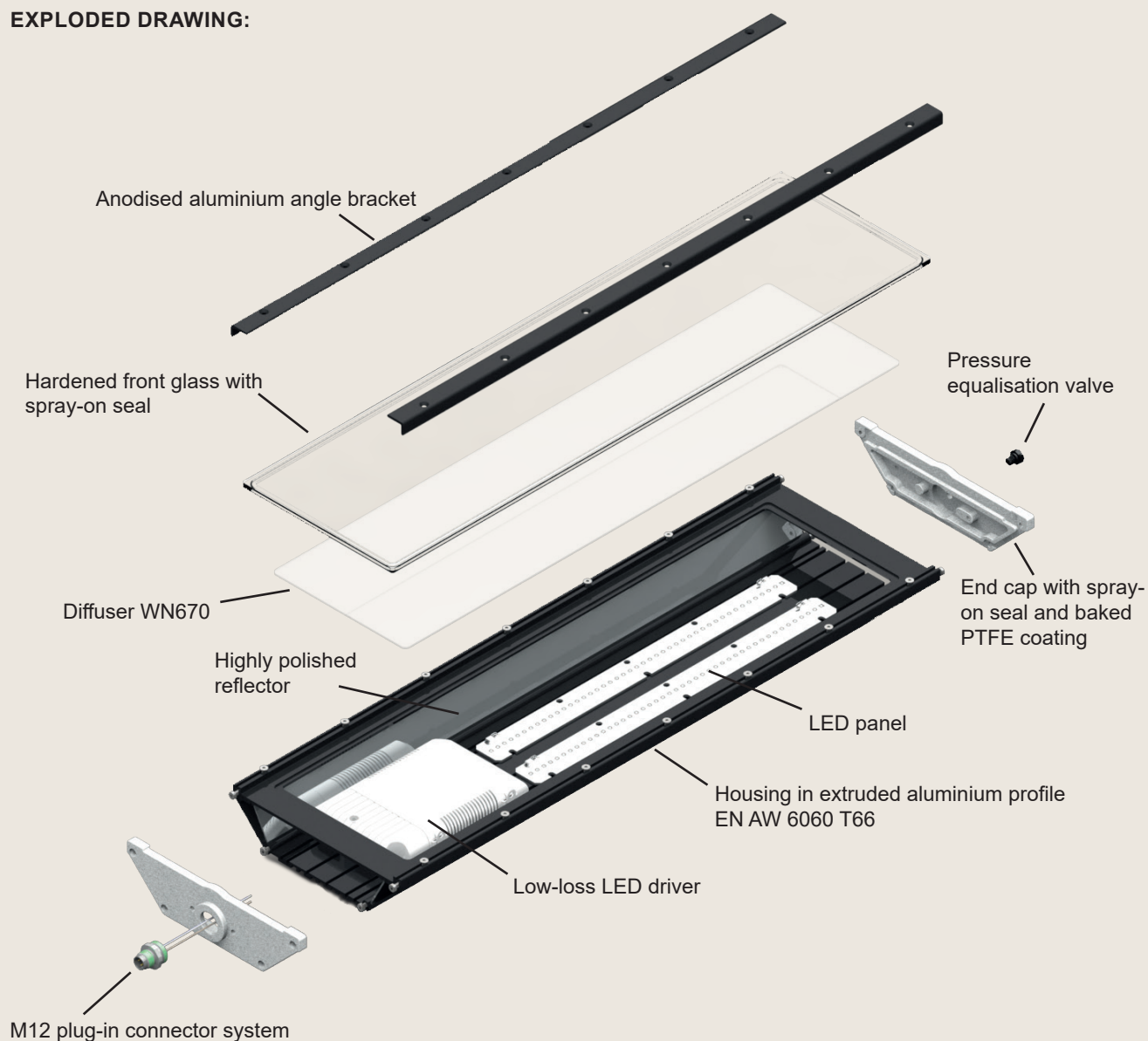
– other models on request / subject to modification and errors –

SPECIAL FEATURES:

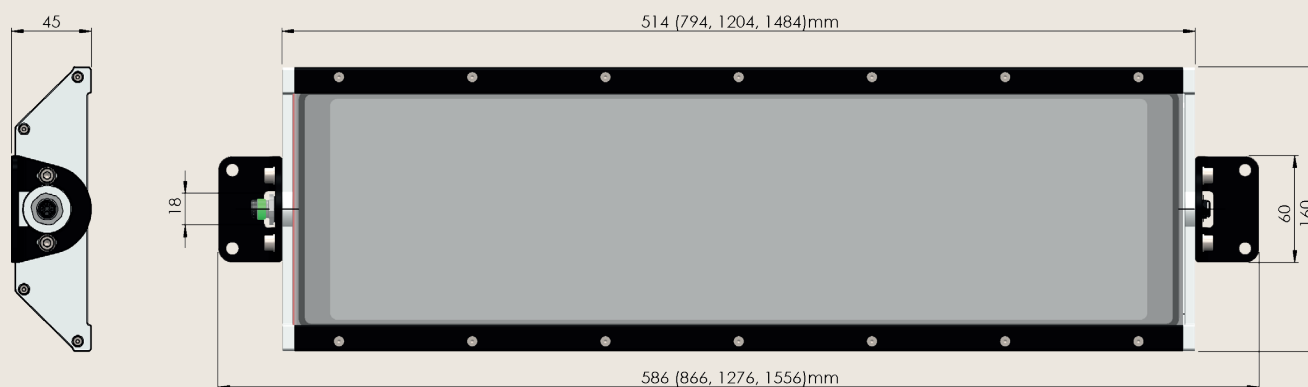
- Lamp body manufactured from black-anodised extruded aluminium profile EN AW 6060 T66
 - Side parts for attaching brackets are manufactured in diecast aluminium with baked PTFE coating
 - 4 mm hardened front glass with spray-on, oil-resistant seal for standard
 - Polycarbonate (coloured) front glass available
 - Diffuser, WN670
 - Low-loss electronic LED driver
 - Colour temperature 5,000 Kelvin
 - Ingress protection type IP 67
 - Standard: 4-pole input with panel-mount connector 12A / M12 plug-in connector system
 - Protection class 1 (230 V) or protection class 3 (safety extra low voltage)
 - Beam angle of 60°/120° and 100°/100° available
 - Versions with 1 LED panel oder 2 LED panels
 - Ambient temperature -25°C to +40°C
 - Special-purpose solutions
 - Models for different application areas, ask for your solution!
- Enclosed, therefore very strong housing.
Large surface area for efficient heat management
 - Side parts with spray-on foam seal make the profile dust and waterproof
 - Resistant to swarf and sparks, dust and waterproof
 - Break-proof, suitable for food industry
 - For a homogeneous distribution of light
 - High efficiency, low energy costs
 - Daylight white
 - Dust and waterproof
 - Coded plug-in connector system with high protection type
 - Excellent personnel protection
 - Individually configurable
 - For various light intensity
 - Suitable for different temperatures
 - For example:
 - dimmable via DALI control
 - dimmable via potentiometer
 - for connecting in series
 - Different application areas, e.g.:
 - Ceiling lights
 - Wall lights
 - Pendant lamp
 - Machine lamp
 - Workplace lamp
 - In wet areas
 - High-bay luminaire
 - Wire rope lamp
 - Food industry

– other models on request / subject to modification and errors –

EXPLODED DRAWING:



DIMENSIONS:



– other models on request / subject to modification and errors –