

Protection Tube Lamps

SPECIAL FEATURES and ACCESSORIES:

Transparent **borosilicate glass** protection tube, 5 mm wall thickness, in 60 mm diameter

- particularly suitable when working with solvents, acids, and organic compounds
- no damage in the case of flying sparks and similar influences
- the particularly good translucence is long-lasting
- impurities on the surface can be removed easily
- protection tube is resistant to cold water and heat
- 70 mm tube diameter on request

Transparent **methacrylate** protection tube, 5 mm wall thickness, in 60 mm diameter

- good mechanical properties
- resistant to oils, fats, and acids
- 70 mm tube diameter on request

Transparent **polycarbonate** protection tube, 1.5 mm wall thickness, in 50 mm diameter

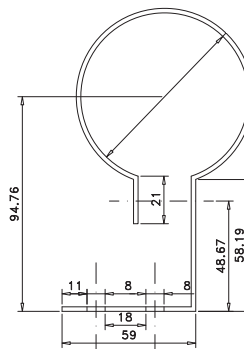
- polycarbonate is the right choice in the case of mechanical loads,
- the low outer diameter of only 50 mm is an advantage in the case of limited available space

Side fasteners of polyamide, glass-fiber-reinforced, with seals of oil resistant rubber NBR, 42SH

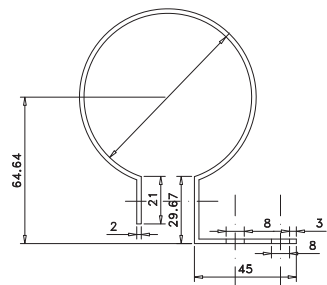
- the side parts seal the lamps dust and water-pressure-tight, IP67
- the fastening screws are made of stainless steel



SEF0023



SEF0022



ACCESSORIES:

Assembly clip for tube Ø 60 mm
with fastening angle 60 mm

Order No.

SEF0023

Assembly clip for tube Ø 60 mm
with fastening angle 45 mm

SEF0022

Assembly clip for tube Ø 60 mm

- clamping range 60 - 65 mm
- Material: polyamide
- Colour: light grey

SEF0024

Assembly clip for tube Ø 50 mm

- clamping range 50 - 55 mm
- Material: polyamide
- Colour: light grey

SEF0013

— other models and spare parts on request / subject to modification and errors —



MODELS Type G6 Smooth end cap (Mounting brackets: see accessories):

Light Source	Output	Lumen	Length in mm	Order No. 24 V AC/DC	Order No. 42 V AC/DC	Order No. 42 V AC	Order No. 230 V AC
25 Mid-Power LEDs	20 W	2,050	512	SLMG62420	SLMG64220	-	SLMG62320
50 Mid-Power LEDs	40 W	4,100	812	SLMG62440	-	SLMG64240	SLMG62340



MODELS Type W6 End caps with integrated mounting angle:

Light Source	Output	Lumen	Length in mm	Order No. 24 V AC/DC	Order No. 42 V AC/DC	Order No. 42 V AC	Order No. 230 V AC
25 Mid-Power LEDs	20 W	2,050	540	SLMW62420	SLMW64220	-	SLMW62320
50 Mid-Power LEDs	40 W	4,100	840	SLMW62440	-	SLMW64240	SLMW62340

FEATURES AND QUALITIES:

- high-quality hard-shell diffusion filter already mounted in the factory
- produces homogeneous light
- simple snap-on mounting on support rail
- filter mounting/dismounting without tools
- conversion of the light to direct lighting by removing the filter



– other models on request / subject to modifications and errors –



MODELS Type G6 Smooth end cap (Mounting brackets: see accessories):

Light Source	Output	Lumen	Length in mm	Order No. 24 V AC/DC	Order No. 42 V AC/DC	Order No. 42 V AC	Order No. 230 V AC
25 Mid-Power LEDs	20 W	2,050	512	SLBG62420	SLBG64220	-	SLBG62320
50 Mid-Power LEDs	40 W	4,100	812	SLBG62440	-	SLBG64240	SLBG62340



MODELS Type W6 End caps with integrated mounting angle:

Light Source	Output	Lumen	Length in mm	Order No. 24 V AC/DC	Order No. 42 V AC/DC	Order No. 42 V AC	Order No. 230 V AC
25 Mid-Power LEDs	20 W	2,050	540	SLBW62420	SLBW64220	-	SLBW62320
50 Mid-Power LEDs	40 W	4,100	840	SLBW62440	-	SLBW64240	SLBW62340

FEATURES AND QUALITIES:

- high-quality hard-shell diffusion filter already mounted in the factory
- produces homogeneous light
- simple snap-on mounting on support rail
- filter mounting/dismounting without tools
- conversion of the light to direct lighting by removing the filter



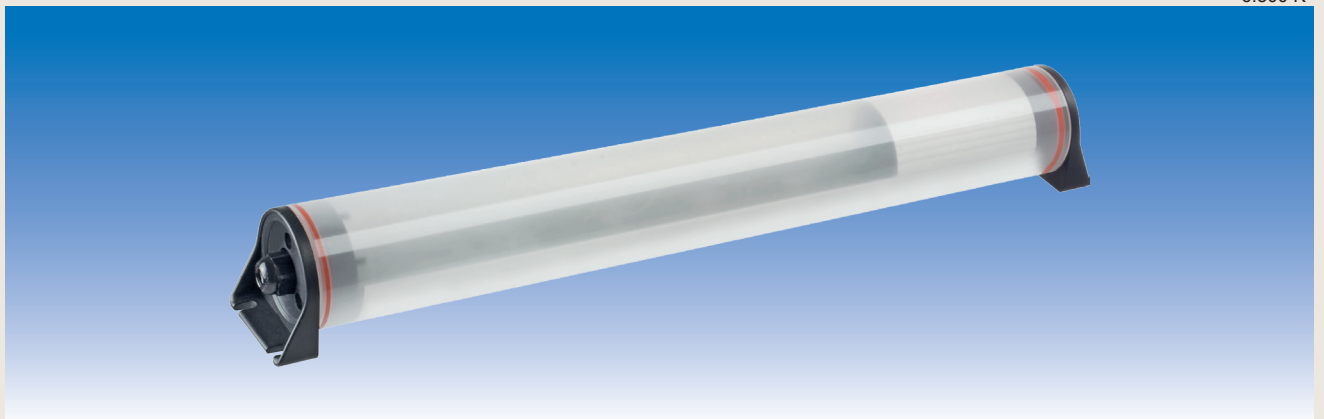
– other models on request / subject to modifications and errors –



MODELS Type G5 Smooth end cap (Mounting brackets: see accessories):

Light Source	Output	Lumen	Length in mm	Order No. 24 V AC/DC	Order No. 42 V AC/DC	Order No. 42 V AC	Order No. 230 V AC
25 Mid-Power LEDs	20 W	2,050	507	SLPGS52420	SLPGS54220	-	-
50 Mid-Power LEDs	40 W	4,100	807	SLPGS52440	-	SLPGS54240	-
60 Mid-Power LEDs	18 W	3,060	640	-	-	-	SLPG52318G*
120 Mid-Power LEDs	26 W	4,460	1.160	-	-	-	SLPG52326G*

* 6.500 K



MODELS Type W5 End caps with integrated mounting angle:

Light Source	Output	Lumen	Length in mm	Order No. 24 V AC/DC	Order No. 42 V AC/DC	Order No. 42 V AC	Order No. 230 V AC
25 Mid-Power LEDs	20 W	2,050	535	SLPW52420	SLPW54220	-	-
50 Mid-Power LEDs	40 W	4,100	835	SLPW52440	-	SLPW54240	-
60 Mid-Power LEDs	18 W	3,060	669	-	-	-	SLPW52318G*
120 Mid-Power LEDs	26 W	4,460	1.189	-	-	-	SLPW52326G*

* 6.500 K

FEATURES AND QUALITIES:

- high-quality hard-shell diffusion filter already mounted in the factory
- produces homogeneous light
- simple snap-on mounting on support rail
- filter mounting/dismounting without tools
- conversion of the light to direct lighting by removing the filter



– other models on request / subject to modifications and errors –

SPECIAL FEATURES:

- IP67 – dust- and watertight → SAFETY also when used in extremely wet areas
- mid-power LEDs provide white, concentrated glare-free illumination → ideal for lighting at close range
- very low generation of heat → no danger of injury from burns in the case of direct physical contact or direct contact with the lamp
- the LEDs are vibration resistant and have a life expectancy of up to 50,000 hours → a sudden total loss of diodes is nearly impossible. Even at the end of operating life, the light does not go out completely. This quality means a high degree of OPERATIONAL RELIABILITY
- an integrated LED driver supplies the LEDs with constant power long-term in DC operation → this ensures an extremely long operating life with optimal lighting performance
- colour temperature 5.500 K (*SLPG523/SLPW523: 6.500 K) → similar to daylight