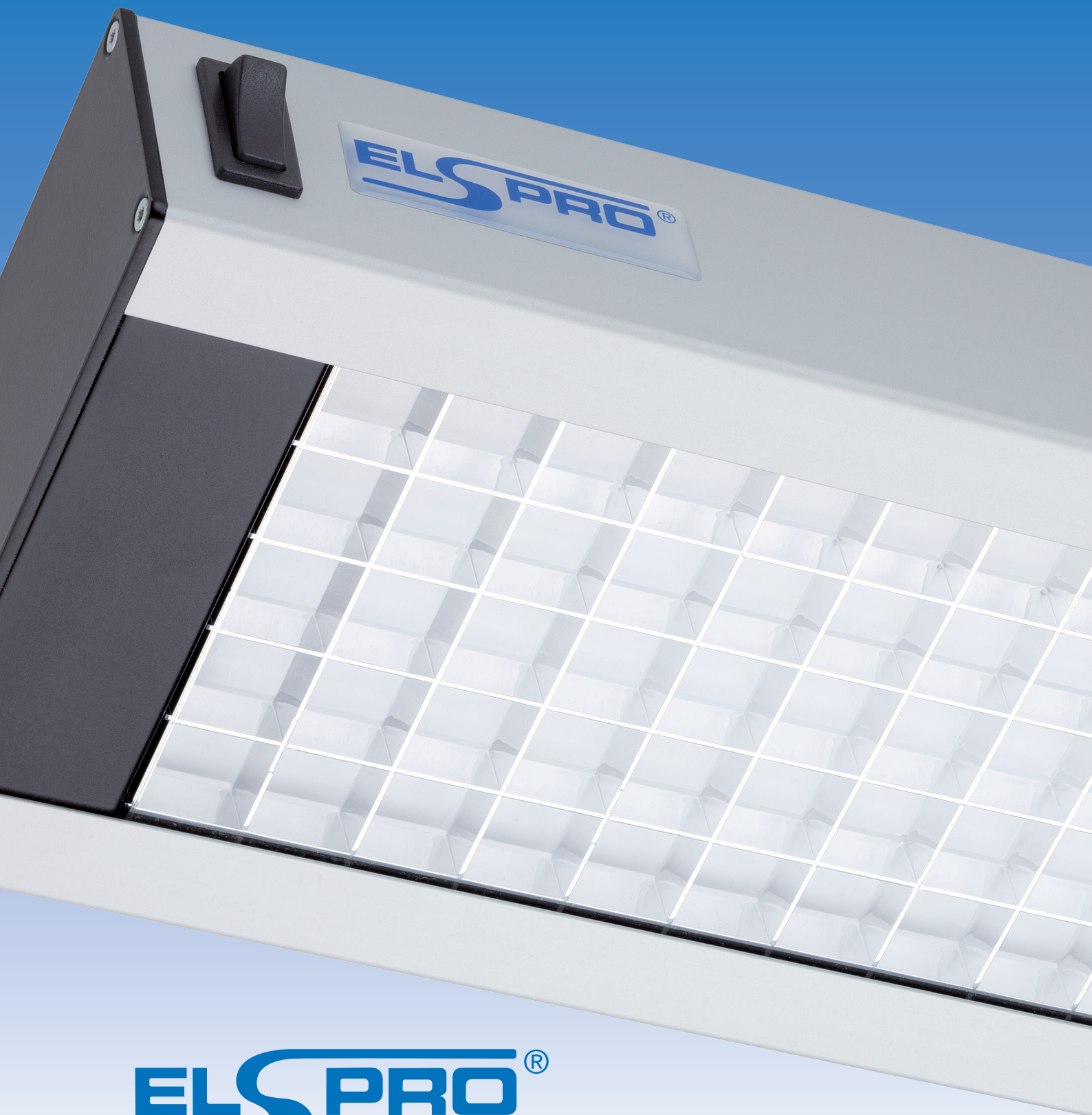


Optimal workplace lighting in accordance
with the requirements of DIN EN 12464-1

ENORM in:

Light Output • Optics • Precision • Efficiency

POWER RASTER



ELSPRO®



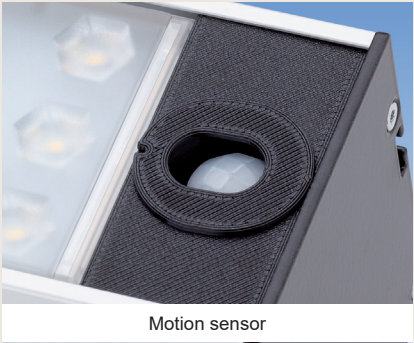
Our POWER product line works with high-quality 60° LED optics for uniform illumination with low system power and optimal glare suppression.

CONFIGURATIONS:

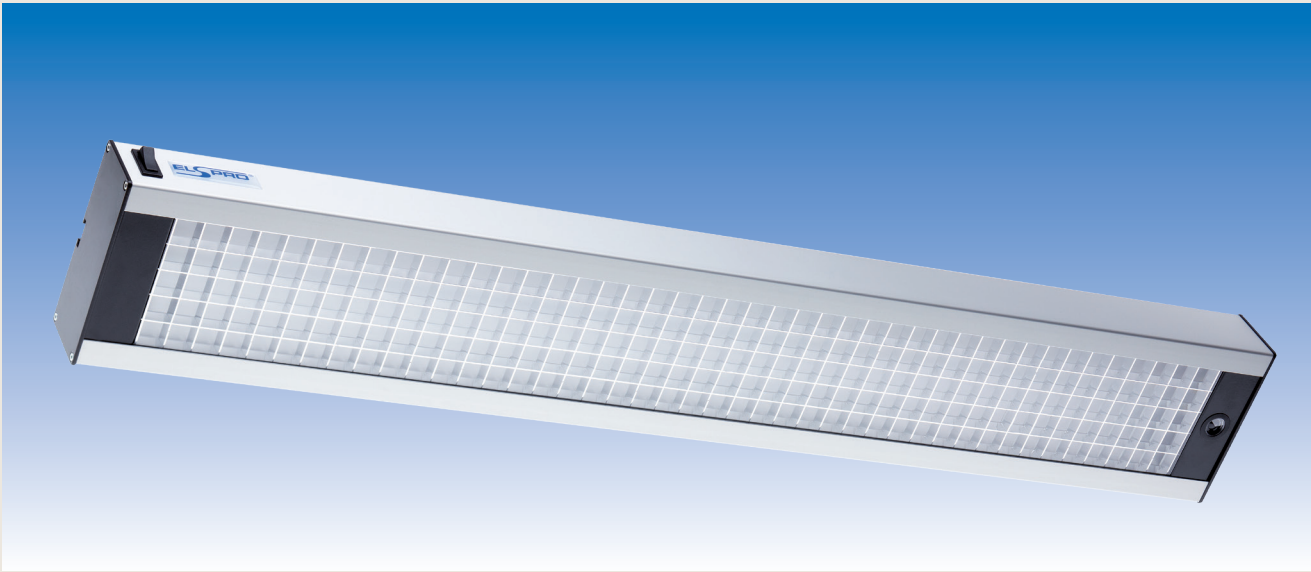
Voltage	Power	Luminous flux	Light source	Colour temperature	Dimensions (L x W x H))	Weight	Order no.
220 - 240 V AC 50 - 60 Hz	12.2 W	1,682 lm	LED panel with highly efficient SMD LEDs	5,000 K	614 x 70 x 80 mm	2.6 kg	WBLP600/S
	16.6 W	2,522 lm			900 x 70 x 80 mm	3.4 kg	WBLP900/S
	20.4 W	3,363 lm			1,186 x 70 x 80 mm	4.1 kg	WBLP1200/S

SPECIAL FEATURES:

- LED optics 3-row, beam angle 60°, frosted
 - Colour rendering index RA > 80, Glare value UGR < 19
 - LED service life L80B10 - 50,000 hours
 - Aluminium housing, anodised, colourless
 - 5.00 m special cable INDUSTRIEFLEX 07HT 3G 1.5 mm²
 - Solid rubber safety plug 3-pole / 16 A / 230 V
 - Motion sensor with 8-minute follow-up time
 - optional: front unit ESD conductivity
- non-glare light with uniform illumination
 - suitable for computer workstations
 - outstanding, proven durability
 - protection category 1, protection rating IP 40
 - premium cable with three design features
 - ergonomic and handy plug shape
 - energy-efficient personal detection
 - protection against electrostatic charges



– additional versions, accessories and spare parts upon request / subject to change and error –



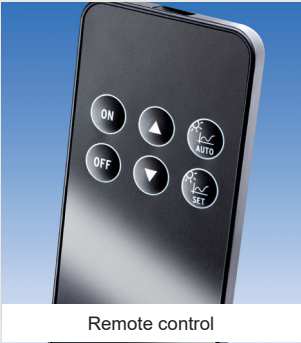
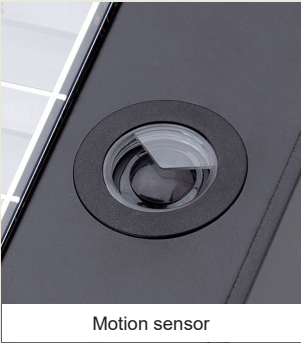
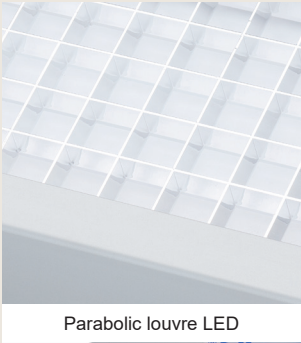
A high-gloss coated parabolic louvre for optimised illumination of workplaces with reduced glare supports the visual performance of the user. For permanent control work in accordance with the Workplace Ordinance.

CONFIGURATIONS:

Voltage	Power	Luminous flux	Light source	Colour temperature	Dimensions (L x W x H))	Weight	Order no.
220 - 240 V AC 50 - 60 Hz	22.2 W	2,077 lm	LED panel with highly efficient SMD LEDs	5,000 K	631 x 135 x 57 mm	2.5 kg	WBLR600/FS
	31.2 W	3,116 lm			999 x 135 x 57 mm	3.2 kg	WBLR900/FS
	40.5 W	4,154 lm			1,186 x 135 x 57 mm	4.1 kg	WBLR1200/FS

SPECIAL FEATURES:

- **Light directing system, three-part, incl. parabolic louvre**
 - Colour rendering index RA > 80, Glare value UGR < 19
 - LED service life L80B10 - 50,000 hours
 - Aluminium housing, anodised, colourless
 - 5.00 m special cable INDUSTRIEFLEX 07HT 3G 1.5 mm²
 - Solid rubber safety plug 3-pole / 16 A / 230 V
 - with internal through wiring 3 x 1.5 mm²
 - with adjustable motion detector
 - remote control: on/off, dimmer function, automatic mode
- non-glare light with uniform illumination
 - suitable for computer workstations
 - outstanding, proven durability
 - protection category 1, protection rating IP 40
 - premium cable with three design features
 - ergonomic and handy plug shape
 - option to connect an additional luminaire
 - adjustable detection range
 - adjustable sensitivity of the daylight sensor



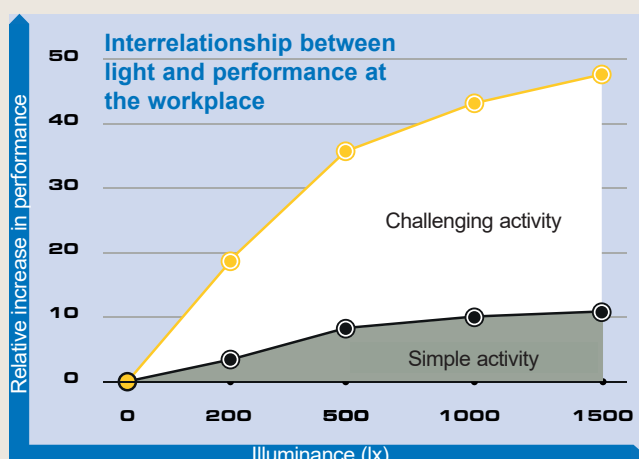
- Other configurations on request / subject to changes and errors -

GOOD LIGHTING – an investment that pays off

Know the feeling? You have had a good night's sleep and actually feel ready to start your day. Yet, when you look out the window at the dull, grey sky, your mood drops. Simultaneously, you feel tiredness creeping into your bones – and the urge to return to bed.

A perfectly normal reaction. This is because we need bright daylight to be active, productive and motivated. This is particularly true to the workplace, where concentration and attention are essential factors that determine efficiency and, as such, the quality of the results.

Therefore, and not only to meet the requirements of the standard, investing in optimal lighting at the workplace is worth your while – already from the very first second!



THE RIGHT LIGHTING and the factors that characterise it

Optimal lighting has an effect, both on a physical and psychological level. Not only does it brighten the room but it also improves the mood of the people working in it.

General and targeted lighting

Ceiling lights provide the basis for a balanced brightness. In addition, an extra source of light is required at the workplace to avoid fatigue and concentration lapses. This is where our LED workbench lights come into their own.

Illuminance and glare-free environment

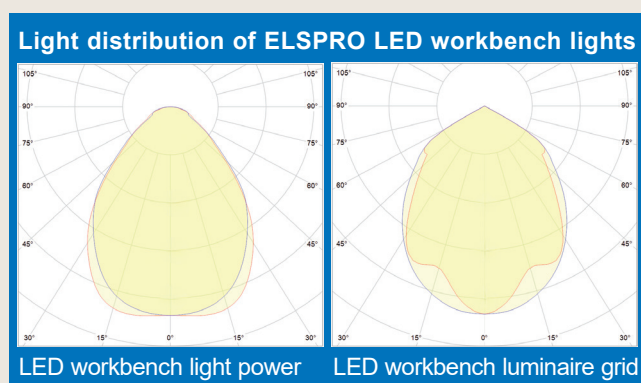
The lighting intensity as well as the avoidance of reflections and mirroring is crucial to ensure good vision and performance at the workplace, since contrasts and details are clearly visible, and concentrated work is possible over a longer period of time. The ELSPRO LED workbench luminaires exceeds the standards as specified in DIN EN 12464-1 for the lighting level at workplaces.

Light quality and light modulation

An optimised ratio of the factors light colour, light direction and individually-adjusted brightness distribution contribute to determining visual comfort, well-being, precision, and productivity at work. Light colours around 5,000 K, which come close to natural daylight, are ideal for work areas.

Energy efficiency

LED lights are currently the most efficient light sources. They consume up to 90% less energy than conventional light sources. Unlike conventional light sources, the LED lights that shine downwards emit all their light in one direction, meaning that none of it is lost in the housing. LED lighting saves so much energy that a conversion can pay for itself in less than two years.



AVAILABLE IN ADDITIONAL VERSIONS:

- Brightness dimmable
- Sense Remote
- Tunable White
- App Connect

Brightness dimmable

With our dimmable product variants, you can flexibly adjust the brightness of the LED lighting and make optimal use of daylight.

Sense Remote

Our Sense Remote products feature programmable motion sensors and daylight sensors, as well as shutters that limit motion detection. They are dimmable via an IR remote control.

Tunable White

Our Tunable White option allows you to adjust the colour temperature of the LED lighting from 2,700 Kelvin (warm white) to 6,500 Kelvin (cool white).

App Connect

Our App Connect luminaires can be programmed and controlled via mobile device app using a smartphone or tablet. This way, you can regulate and control our lighting systems wirelessly.