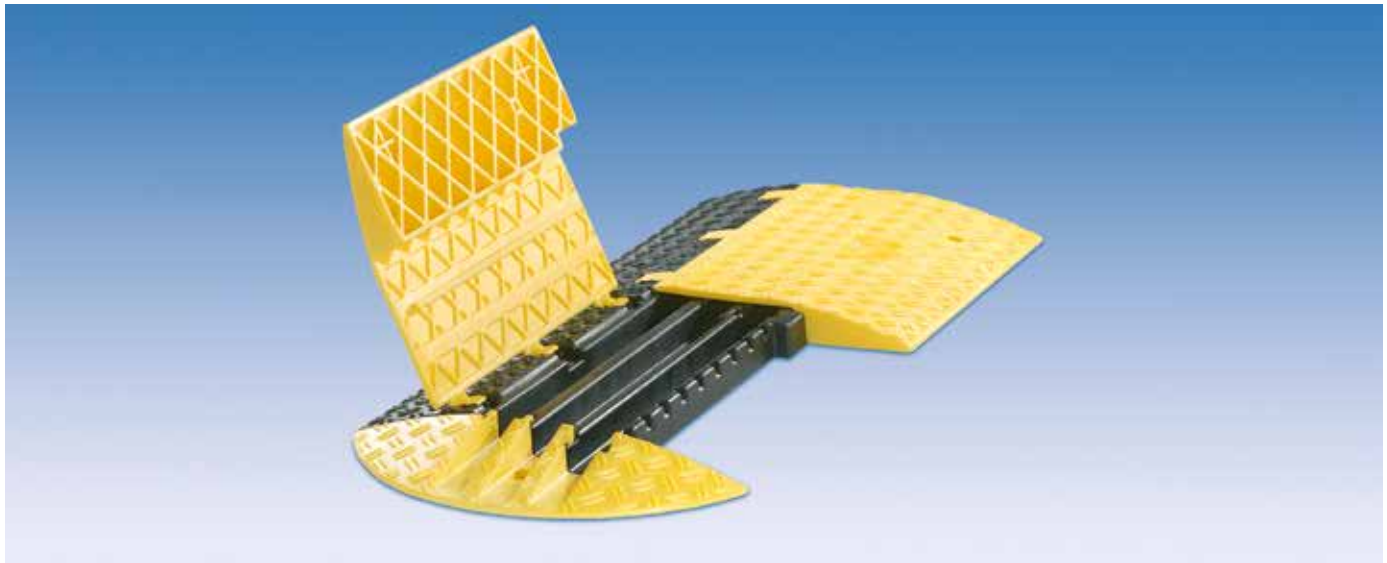


## Type KB3X35



### Lightweight - Take the Next One ...

The KB3X35 is an ultra-light premium product made by ELSPRO, featuring an innovative folding mechanism\*. Two through holes for fixation guarantee additional opportunities for anchoring the cable bridge. By affixing the yellow ramp cover with the ground below using screws, it is possible to securely close the cable bridge system.

### Technical Data:

- load capacity of 9 tons if distributed evenly
- 3 passage channels, each 35 mm in diameter
- material: injection-molded polypropylene
- temperature-resistant from -40° C to +60° C
- non-slip surface with corrugated structure
- color: hazard identification black-yellow; end piece: yellow

Description	Model	Surface resistance	Dimensions (L x W x H)	Weight	Gradient Angle	Order No.
Bridge piece KB3X35			500 x 500 x 55 mm	4,00 kg	ca. 20°	<b>KB3X35</b>
End piece KB3X35			160 x 500 x 55 mm	0,85 kg		<b>KB3X35E</b>
Bridge piece KB3X35	antistatic	< 10 <sup>9</sup> Ohm	500 x 500 x 55 mm	4,00 kg		<b>KB3X35X</b>
End piece KB3X35	antistatic	< 10 <sup>9</sup> Ohm	160 x 500 x 55 mm	0,85 kg		<b>KB3X35EX</b>

The ELSPRO cable bridge system **KB3X35** is designed for diverse fields of use. The system is easy to assemble in a short period of time, which makes it especially suitable for the protective laying of cables, for instance at street festivals, weekly markets, or music and sports events. Monitored crossing by heavy trucks is permitted.

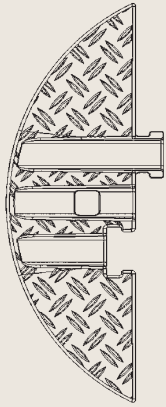
- diverse range of application areas
- very quick and simple assembly
- tripping hazards are mitigated

\*German patent  
no. 102007018590.3

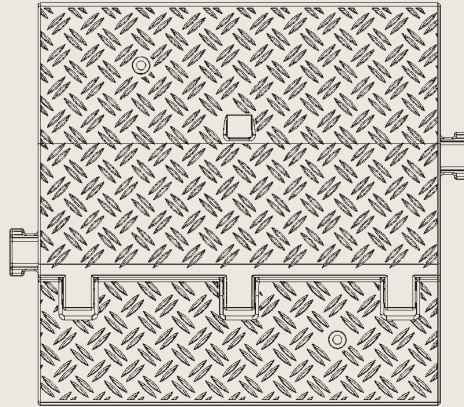


– other models on request / subject to modification and errors –

## Type KB3X35



Length: 160 mm  
 Width: 500 mm  
 Height: 55 mm  
 Weight: 0.85 kg



Length: 500 mm  
 Width: 500 mm  
 Height: 55 mm  
 Weight: 4.00 kg



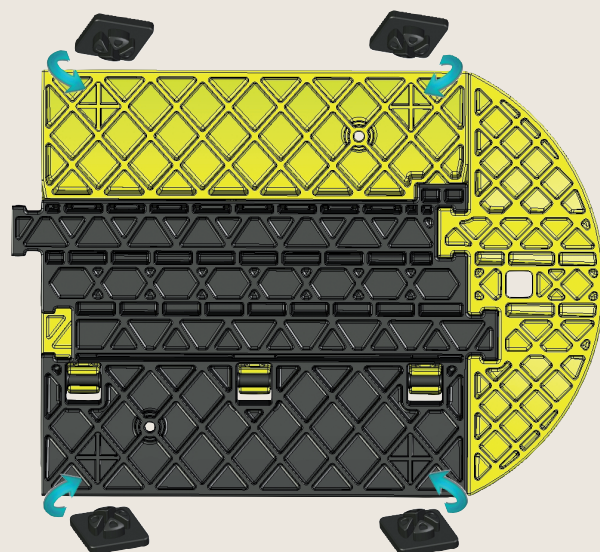
Channels:  
 3x 35 x 35 mm

### FEATURES AND QUALITIES:

- load capacity of 9 tons if distributed evenly
- next to no chance of the cable bridge breaking, even under significant strain; high flexibility
- severe blows are absorbed by the material
- long service life, even when subjected to mechanical strain
- hazard identification yellow-black
- light and easy handling thanks to practical size and very lightweight design

### Special Models on Request:

- ▣ imprinting of company name/logo
- ▣ different color combinations



### Accessories:

Stopper Set (4 pieces)

Order No.

**KB3X35S**

The underside of each bridge section has been prepared for the addition of four diamond-shaped stoppers made of non-slip elastomer. They improve the resting qualities of smooth surfaces.