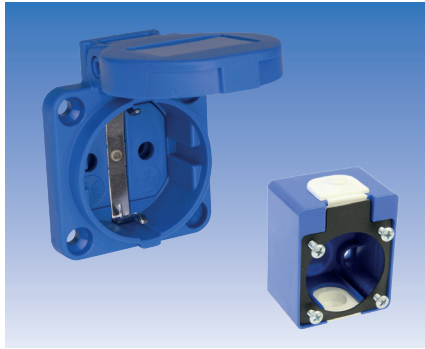


## Industrial Plugs and Sockets with Earthing Contact

2pol. + PE, 10/16 A, 250 V, nach DIN 49440 und 49441-2-AR1 (IEC 884) DIN VDE 0620h, CEE7/VII  
2pol. + PE, 10/16 A, 250 V, SEV 1011

Order No.



### Built-in socket

- with self-closing hinged lid



**SCH51P**

### Wall-mounted socket (lower segment)



**SCH61P**

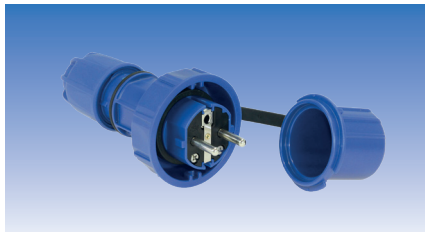
### Wall-mounted socket

- no fig. – (SCH51P + SCH61P)



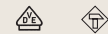
**SCH71P**

Cable entry from top to bottom!

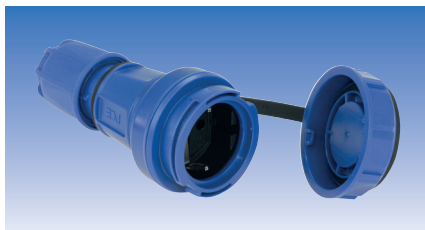


### Plug with earthing contact, water-pressure-tight

- with lock ring and cap
- material PC/ABS
- DIN 49 443-R2
- protection class IP66/68

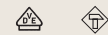


**SCH11WDP**

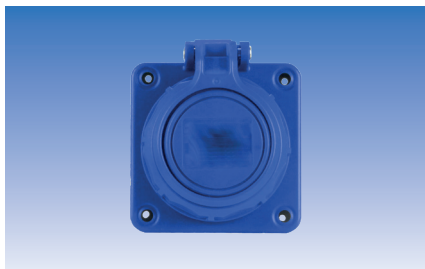


### Socket with earthing contact, water-pressure-tight

- with cap
- material PC/ABS
- DIN 49 442-B
- protection class IP66/68

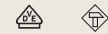


**SCH21WDP**



### Built-in socket, water-pressure-tight

- with self-closing hinged lid
- material PC/ABS
- DIN 49 442
- protection class IP66/68



**SCH51WDP**

## Industrial connection boxes



### Connection box 3 pol. / 230 V / ~50 Hz

- I-Box, 2 connections
- material PA 6.6, colour black
- dimensions 134 x Ø 27 mm
- cable diameter 7 - 13,5 mm
- protection class IP68

**VB2M20**

### Connection box 5 pol. / 400 V / ~50 Hz (o. Abb.)

- I-Box, 2 connections
- material PA 6.6, colour black
- dimensions 135 x Ø 35 mm
- cable diameter 7 - 13,5 mm
- protection class IP68

**VB2M25**

### Connection box 3 pol. / 230 V / ~50 Hz

- T-Box, 3 connections
- material PA 6.6, colour black
- dimensions 116 x 101 x Ø 34 mm
- cable diameter 7 - 13,5 mm
- protection class IP68

**VB3M20II**

– subject to modification and errors –